

Return of Organization Exempt From Income Tax
 Under section 501(c), 527, or 4947(a)(1) of the Internal Revenue Code (except black lung benefit trust or private foundation)

Department of the Treasury
 Internal Revenue Service

▶ The organization may have to use a copy of this return to satisfy state reporting requirements.

Open to Public Inspection

A For the 2011 calendar year, or tax year beginning and ending

B Check if applicable: <input type="checkbox"/> Address change <input type="checkbox"/> Name change <input type="checkbox"/> Initial return <input type="checkbox"/> Terminated <input type="checkbox"/> Amended return <input type="checkbox"/> Application pending	C Name of organization NATIONAL ASSOCIATION FOR INTERPRETATION Doing Business As Number and street (or P.O. box if mail is not delivered to street address) Room/suite P.O. BOX 2246 City or town, state or country, and ZIP + 4 FORT COLLINS, CO 80522 F Name and address of principal officer: JIM COVEL 230 CHERRY STREET, FORT COLLINS, CO 80522	D Employer identification number 84-1036938 E Telephone number 970-484-8283 G Gross receipts \$ 1,586,983. H(a) Is this a group return for affiliates? <input type="checkbox"/> Yes <input checked="" type="checkbox"/> No H(b) Are all affiliates included? <input type="checkbox"/> Yes <input type="checkbox"/> No If "No," attach a list. (see instructions) H(c) Group exemption number ▶
I Tax-exempt status: <input checked="" type="checkbox"/> 501(c)(3) <input type="checkbox"/> 501(c) () ◀ (insert no.) <input type="checkbox"/> 4947(a)(1) or <input type="checkbox"/> 527		
J Website: ▶ WWW.INTERPNET.COM		
K Form of organization: <input checked="" type="checkbox"/> Corporation <input type="checkbox"/> Trust <input type="checkbox"/> Association <input type="checkbox"/> Other ▶		L Year of formation: 1988 M State of legal domicile: CO

Part I Summary

Activities & Governance	1 Briefly describe the organization's mission or most significant activities: <u>TO INSPIRE LEADERSHIP AND EXCELLENCE TO ADVANCE HERITAGE INTERPRETATION AS A PROFESSION.</u> 2 Check this box <input type="checkbox"/> if the organization discontinued its operations or disposed of more than 25% of its net assets. 3 Number of voting members of the governing body (Part VI, line 1a) 3 16 4 Number of independent voting members of the governing body (Part VI, line 1b) 4 16 5 Total number of individuals employed in calendar year 2011 (Part V, line 2a) 5 9 6 Total number of volunteers (estimate if necessary) 6 621 7a Total unrelated business revenue from Part VIII, column (C), line 12 7a 46,149. b Net unrelated business taxable income from Form 990-T, line 34 7b -10,301.																									
Revenue		<table border="1" style="width:100%; border-collapse: collapse;"> <thead> <tr> <th></th> <th>Prior Year</th> <th>Current Year</th> </tr> </thead> <tbody> <tr> <td>8 Contributions and grants (Part VIII, line 1h)</td> <td style="text-align: right;">79,820.</td> <td style="text-align: right;">155,241.</td> </tr> <tr> <td>9 Program service revenue (Part VIII, line 2g)</td> <td style="text-align: right;">1,355,223.</td> <td style="text-align: right;">1,221,626.</td> </tr> <tr> <td>10 Investment income (Part VIII, column (A), lines 3, 4, and 7d)</td> <td style="text-align: right;">4,486.</td> <td style="text-align: right;">-3,975.</td> </tr> <tr> <td>11 Other revenue (Part VIII, column (A), lines 5, 6d, 8c, 9c, 10c, and 11e)</td> <td style="text-align: right;">36,565.</td> <td style="text-align: right;">34,417.</td> </tr> <tr> <td>12 Total revenue - add lines 8 through 11 (must equal Part VIII, column (A), line 12)</td> <td style="text-align: right;">1,476,094.</td> <td style="text-align: right;">1,407,309.</td> </tr> </tbody> </table>		Prior Year	Current Year	8 Contributions and grants (Part VIII, line 1h)	79,820.	155,241.	9 Program service revenue (Part VIII, line 2g)	1,355,223.	1,221,626.	10 Investment income (Part VIII, column (A), lines 3, 4, and 7d)	4,486.	-3,975.	11 Other revenue (Part VIII, column (A), lines 5, 6d, 8c, 9c, 10c, and 11e)	36,565.	34,417.	12 Total revenue - add lines 8 through 11 (must equal Part VIII, column (A), line 12)	1,476,094.	1,407,309.						
	Prior Year	Current Year																								
8 Contributions and grants (Part VIII, line 1h)	79,820.	155,241.																								
9 Program service revenue (Part VIII, line 2g)	1,355,223.	1,221,626.																								
10 Investment income (Part VIII, column (A), lines 3, 4, and 7d)	4,486.	-3,975.																								
11 Other revenue (Part VIII, column (A), lines 5, 6d, 8c, 9c, 10c, and 11e)	36,565.	34,417.																								
12 Total revenue - add lines 8 through 11 (must equal Part VIII, column (A), line 12)	1,476,094.	1,407,309.																								
Expenses		<table border="1" style="width:100%; border-collapse: collapse;"> <tbody> <tr> <td>13 Grants and similar amounts paid (Part IX, column (A), lines 1-3)</td> <td style="text-align: right;">51,838.</td> <td style="text-align: right;">48,606.</td> </tr> <tr> <td>14 Benefits paid to or for members (Part IX, column (A), line 4)</td> <td style="text-align: right;">0.</td> <td style="text-align: right;">0.</td> </tr> <tr> <td>15 Salaries, other compensation, employee benefits (Part IX, column (A), lines 5-10)</td> <td style="text-align: right;">673,130.</td> <td style="text-align: right;">622,487.</td> </tr> <tr> <td>16a Professional fundraising fees (Part IX, column (A), line 11e)</td> <td style="text-align: right;">0.</td> <td style="text-align: right;">0.</td> </tr> <tr> <td>b Total fundraising expenses (Part IX, column (D), line 25) ▶ 7,871.</td> <td></td> <td></td> </tr> <tr> <td>17 Other expenses (Part IX, column (A), lines 11a-11d, 11f-24e)</td> <td style="text-align: right;">747,771.</td> <td style="text-align: right;">636,680.</td> </tr> <tr> <td>18 Total expenses. Add lines 13-17 (must equal Part IX, column (A), line 25)</td> <td style="text-align: right;">1,472,739.</td> <td style="text-align: right;">1,307,773.</td> </tr> <tr> <td>19 Revenue less expenses. Subtract line 18 from line 12</td> <td style="text-align: right;">3,355.</td> <td style="text-align: right;">99,536.</td> </tr> </tbody> </table>	13 Grants and similar amounts paid (Part IX, column (A), lines 1-3)	51,838.	48,606.	14 Benefits paid to or for members (Part IX, column (A), line 4)	0.	0.	15 Salaries, other compensation, employee benefits (Part IX, column (A), lines 5-10)	673,130.	622,487.	16a Professional fundraising fees (Part IX, column (A), line 11e)	0.	0.	b Total fundraising expenses (Part IX, column (D), line 25) ▶ 7,871.			17 Other expenses (Part IX, column (A), lines 11a-11d, 11f-24e)	747,771.	636,680.	18 Total expenses. Add lines 13-17 (must equal Part IX, column (A), line 25)	1,472,739.	1,307,773.	19 Revenue less expenses. Subtract line 18 from line 12	3,355.	99,536.
13 Grants and similar amounts paid (Part IX, column (A), lines 1-3)	51,838.	48,606.																								
14 Benefits paid to or for members (Part IX, column (A), line 4)	0.	0.																								
15 Salaries, other compensation, employee benefits (Part IX, column (A), lines 5-10)	673,130.	622,487.																								
16a Professional fundraising fees (Part IX, column (A), line 11e)	0.	0.																								
b Total fundraising expenses (Part IX, column (D), line 25) ▶ 7,871.																										
17 Other expenses (Part IX, column (A), lines 11a-11d, 11f-24e)	747,771.	636,680.																								
18 Total expenses. Add lines 13-17 (must equal Part IX, column (A), line 25)	1,472,739.	1,307,773.																								
19 Revenue less expenses. Subtract line 18 from line 12	3,355.	99,536.																								
Net Assets or Fund Balances		<table border="1" style="width:100%; border-collapse: collapse;"> <thead> <tr> <th></th> <th>Beginning of Current Year</th> <th>End of Year</th> </tr> </thead> <tbody> <tr> <td>20 Total assets (Part X, line 16)</td> <td style="text-align: right;">1,346,107.</td> <td style="text-align: right;">1,403,621.</td> </tr> <tr> <td>21 Total liabilities (Part X, line 26)</td> <td style="text-align: right;">1,056,332.</td> <td style="text-align: right;">1,008,357.</td> </tr> <tr> <td>22 Net assets or fund balances. Subtract line 21 from line 20</td> <td style="text-align: right;">289,775.</td> <td style="text-align: right;">395,264.</td> </tr> </tbody> </table>		Beginning of Current Year	End of Year	20 Total assets (Part X, line 16)	1,346,107.	1,403,621.	21 Total liabilities (Part X, line 26)	1,056,332.	1,008,357.	22 Net assets or fund balances. Subtract line 21 from line 20	289,775.	395,264.												
	Beginning of Current Year	End of Year																								
20 Total assets (Part X, line 16)	1,346,107.	1,403,621.																								
21 Total liabilities (Part X, line 26)	1,056,332.	1,008,357.																								
22 Net assets or fund balances. Subtract line 21 from line 20	289,775.	395,264.																								

Part II Signature Block

Under penalties of perjury, I declare that I have examined this return, including accompanying schedules and statements, and to the best of my knowledge and belief, it is true, correct, and complete. Declaration of preparer (other than officer) is based on all information of which preparer has any knowledge.

Sign Here	Signature of officer TIM MERRIMAN, EXECUTIVE DIRECTOR Type or print name and title	Date
Paid Preparer Use Only	Print/Type preparer's name SUSAN R. JOHNSON	Preparer's signature Date Check if self-employed <input type="checkbox"/> PTIN P01287360
	Firm's name ▶ BROCK AND COMPANY, CPAS, P.C. Firm's address ▶ 3711 JFK PARKWAY, #315 FORT COLLINS, CO 80525	Firm's EIN ▶ 84-0930288 Phone no. 970-223-7855

May the IRS discuss this return with the preparer shown above? (see instructions) Yes No

Part III Statement of Program Service Accomplishments

Check if Schedule O contains a response to any question in this Part III [X]

1 Briefly describe the organization's mission: TO INSPIRE LEADERSHIP AND EXCELLENCE AND TO ADVANCE THE PROFESSION OF HERITAGE INTERPRETATION BY:

A. FACILITATING COMMUNICATION AMONG THOSE IN THE INTERPRETATION PROFESSION BY THE EXCHANGE OF IDEAS, TECHNIQUES, AND MUTUAL

2 Did the organization undertake any significant program services during the year which were not listed on the prior Form 990 or 990-EZ? [] Yes [X] No

3 Did the organization cease conducting, or make significant changes in how it conducts, any program services? [] Yes [X] No

4 Describe the organization's program service accomplishments for each of its three largest program services, as measured by expenses.

4a (Code:) (Expenses \$ 373,241. including grants of \$) (Revenue \$ 553,308.) INTERNATIONAL, NATIONAL AND REGIONAL WORKSHOPS - THE INTERNATIONAL CONFERENCE IN 2011 HAD 85 PERSONS ATTENDING IN PANAMA. THE NATIONAL WORKSHOP IN ST. PAUL, MN. IN NOVEMBER OF 2011 HAD 900 IN ATTENDANCE. THESE VARY IN SIZE FROM 650 TO 1,000 ATENDEES EACH YEAR. ABOUT 500 OTHER PEOPLE ATTENDED REGIONAL WORKSHOPS IN VARIED LOCATIONS AMOUNG TEN U.S. REGIONS. THESE WORKSHOPS AND CONFERENCES INCLUDED KEYNOTES, CONCURRENT SESSIONS AND OFF-SITE SESSIONS. MEMBERS AND NON-MEMBERS ATTEND TO NETWORK AND LEARN FROM EACH OTHER.

4b (Code:) (Expenses \$ 54,175. including grants of \$) (Revenue \$ 298,095.) CERTIFICATION AND TRAINING - PROFESSIONAL CREDENTIALING IN SIX CATEGORIES IS A PRIMARY GOAL OF THE ORGANIZATION AND THIS IS OPEN TO MEMBERS AND NON-MEMBERS. NAI'S PROFESSIONAL TRAINING WORKSHOPS ASSIST PEOPLE IN EARNING THE CREDENTIALS AND SOME OF THE WORKSHOPS ARE TRAINING PROGRAMS THAT CONFER A CREDENTIAL AT END OF THE COURSE (I.E. CERTIFIED INTERPRETIVE GUIDE, CERTIFIED INTERPRETIVE HOST). THE FOUR PROFESSIONAL CATEGORIES (CERTIFIED HERITAGE INTERPRETER, CERTIFIED INTERPRETIVE TRAINER, CERTIFIED INTERPRETIVE PLANNER AND CERTIFIED INTERPRETIVE MANAGERS) MAY BE EARNED BY MEMBERS OR NON-MEMBERS BY APPLYING THROUGH NAI FOR A PROCESS OF EVALUATION THAT INCLUDE PEER-REVIEWS BY THOSE ALREADY HOLDING THOSE CREDENTIALS.

4c (Code:) (Expenses \$ 131,318. including grants of \$) (Revenue \$ 100,889.) PRINT PUBLICATIONS AND E-NEWSLETTERS - THE PRODUCTION AND DISTRIBUTION OF HIGH QUALITY PUBLICATIONS TO EDUCATE AND SERVE MEMBERS AND NON-MEMBERS IN PROFESSIONAL DEVELOPMENT IS ANOTHER GOAL. NAI PRODUCES ONE BI-MONTHLY MAGAZINE (LEGACY), TWO JOURNALS OF INTERPRETATION ANNUALLY, AND 24 E-NEWSLETTERS (NAINOW) EACH YEAR. WE HAVE 10 REGIONAL AFFILIATES AND 10 AFFINITY GROUPS WHO ALSO PRODUCE QUARTERLY ELECTRONIC NEWSLETTERS TO INTERESTED PARTIES. APPROXIMATE NUMBERS OF PRINT AND E-NEWSLETTERS DELIVERED ARE: LEGACY MAGAZINE = 32,000; JOURNAL OF INTERPRETATION RESEARCH = 10,000; NAINOW E-NEWSLETTER = 124,000; REGIONAL/SECTION E-NEWSLETTERS = 25,200

4d Other program services (Describe in Schedule O.) (Expenses \$ 631,137. including grants of \$) (Revenue \$ 272,570.)

4e Total program service expenses 1,189,871.

Part IV Checklist of Required Schedules

		Yes	No
1	Is the organization described in section 501(c)(3) or 4947(a)(1) (other than a private foundation)? <i>If "Yes," complete Schedule A</i>	X	
2	Is the organization required to complete <i>Schedule B, Schedule of Contributors</i> ?	X	
3	Did the organization engage in direct or indirect political campaign activities on behalf of or in opposition to candidates for public office? <i>If "Yes," complete Schedule C, Part I</i>		X
4	Section 501(c)(3) organizations. Did the organization engage in lobbying activities, or have a section 501(h) election in effect during the tax year? <i>If "Yes," complete Schedule C, Part II</i>		X
5	Is the organization a section 501(c)(4), 501(c)(5), or 501(c)(6) organization that receives membership dues, assessments, or similar amounts as defined in Revenue Procedure 98-19? <i>If "Yes," complete Schedule C, Part III</i>		X
6	Did the organization maintain any donor advised funds or any similar funds or accounts for which donors have the right to provide advice on the distribution or investment of amounts in such funds or accounts? <i>If "Yes," complete Schedule D, Part I</i>		X
7	Did the organization receive or hold a conservation easement, including easements to preserve open space, the environment, historic land areas, or historic structures? <i>If "Yes," complete Schedule D, Part II</i>		X
8	Did the organization maintain collections of works of art, historical treasures, or other similar assets? <i>If "Yes," complete Schedule D, Part III</i>		X
9	Did the organization report an amount in Part X, line 21; serve as a custodian for amounts not listed in Part X; or provide credit counseling, debt management, credit repair, or debt negotiation services? <i>If "Yes," complete Schedule D, Part IV</i>		X
10	Did the organization, directly or through a related organization, hold assets in temporarily restricted endowments, permanent endowments, or quasi-endowments? <i>If "Yes," complete Schedule D, Part V</i>	X	
11	If the organization's answer to any of the following questions is "Yes," then complete Schedule D, Parts VI, VII, VIII, IX, or X as applicable.		
a	Did the organization report an amount for land, buildings, and equipment in Part X, line 10? <i>If "Yes," complete Schedule D, Part VI</i>	X	
b	Did the organization report an amount for investments - other securities in Part X, line 12 that is 5% or more of its total assets reported in Part X, line 16? <i>If "Yes," complete Schedule D, Part VII</i>		X
c	Did the organization report an amount for investments - program related in Part X, line 13 that is 5% or more of its total assets reported in Part X, line 16? <i>If "Yes," complete Schedule D, Part VIII</i>		X
d	Did the organization report an amount for other assets in Part X, line 15 that is 5% or more of its total assets reported in Part X, line 16? <i>If "Yes," complete Schedule D, Part IX</i>		X
e	Did the organization report an amount for other liabilities in Part X, line 25? <i>If "Yes," complete Schedule D, Part X</i>	X	
f	Did the organization's separate or consolidated financial statements for the tax year include a footnote that addresses the organization's liability for uncertain tax positions under FIN 48 (ASC 740)? <i>If "Yes," complete Schedule D, Part X</i>	X	
12a	Did the organization obtain separate, independent audited financial statements for the tax year? <i>If "Yes," complete Schedule D, Parts XI, XII, and XIII</i>	X	
b	Was the organization included in consolidated, independent audited financial statements for the tax year? <i>If "Yes," and if the organization answered "No" to line 12a, then completing Schedule D, Parts XI, XII, and XIII is optional</i>		X
13	Is the organization a school described in section 170(b)(1)(A)(ii)? <i>If "Yes," complete Schedule E</i>		X
14a	Did the organization maintain an office, employees, or agents outside of the United States?		X
b	Did the organization have aggregate revenues or expenses of more than \$10,000 from grantmaking, fundraising, business, investment, and program service activities outside the United States, or aggregate foreign investments valued at \$100,000 or more? <i>If "Yes," complete Schedule F, Parts I and IV</i>	X	
15	Did the organization report on Part IX, column (A), line 3, more than \$5,000 of grants or assistance to any organization or entity located outside the United States? <i>If "Yes," complete Schedule F, Parts II and IV</i>		X
16	Did the organization report on Part IX, column (A), line 3, more than \$5,000 of aggregate grants or assistance to individuals located outside the United States? <i>If "Yes," complete Schedule F, Parts III and IV</i>		X
17	Did the organization report a total of more than \$15,000 of expenses for professional fundraising services on Part IX, column (A), lines 6 and 11e? <i>If "Yes," complete Schedule G, Part I</i>		X
18	Did the organization report more than \$15,000 total of fundraising event gross income and contributions on Part VIII, lines 1c and 8a? <i>If "Yes," complete Schedule G, Part II</i>		X
19	Did the organization report more than \$15,000 of gross income from gaming activities on Part VIII, line 9a? <i>If "Yes," complete Schedule G, Part III</i>		X
20a	Did the organization operate one or more hospital facilities? <i>If "Yes," complete Schedule H</i>		X
b	If "Yes" to line 20a, did the organization attach a copy of its audited financial statements to this return?		

Part IV Checklist of Required Schedules (continued)

	Yes	No
21 Did the organization report more than \$5,000 of grants and other assistance to any government or organization in the United States on Part IX, column (A), line 1? <i>If "Yes," complete Schedule I, Parts I and II</i>	X	
22 Did the organization report more than \$5,000 of grants and other assistance to individuals in the United States on Part IX, column (A), line 2? <i>If "Yes," complete Schedule I, Parts I and III</i>	X	
23 Did the organization answer "Yes" to Part VII, Section A, line 3, 4, or 5 about compensation of the organization's current and former officers, directors, trustees, key employees, and highest compensated employees? <i>If "Yes," complete Schedule J</i>		X
24a Did the organization have a tax-exempt bond issue with an outstanding principal amount of more than \$100,000 as of the last day of the year, that was issued after December 31, 2002? <i>If "Yes," answer lines 24b through 24d and complete Schedule K. If "No," go to line 25</i>	X	
b Did the organization invest any proceeds of tax-exempt bonds beyond a temporary period exception?		X
c Did the organization maintain an escrow account other than a refunding escrow at any time during the year to defease any tax-exempt bonds?		X
d Did the organization act as an "on behalf of" issuer for bonds outstanding at any time during the year?		X
25a Section 501(c)(3) and 501(c)(4) organizations. Did the organization engage in an excess benefit transaction with a disqualified person during the year? <i>If "Yes," complete Schedule L, Part I</i>		X
b Is the organization aware that it engaged in an excess benefit transaction with a disqualified person in a prior year, and that the transaction has not been reported on any of the organization's prior Forms 990 or 990-EZ? <i>If "Yes," complete Schedule L, Part I</i>		X
26 Was a loan to or by a current or former officer, director, trustee, key employee, highly compensated employee, or disqualified person outstanding as of the end of the organization's tax year? <i>If "Yes," complete Schedule L, Part II</i>		X
27 Did the organization provide a grant or other assistance to an officer, director, trustee, key employee, substantial contributor or employee thereof, a grant selection committee member, or to a 35% controlled entity or family member of any of these persons? <i>If "Yes," complete Schedule L, Part III</i>		X
28 Was the organization a party to a business transaction with one of the following parties (see Schedule L, Part IV instructions for applicable filing thresholds, conditions, and exceptions):		
a A current or former officer, director, trustee, or key employee? <i>If "Yes," complete Schedule L, Part IV</i>		X
b A family member of a current or former officer, director, trustee, or key employee? <i>If "Yes," complete Schedule L, Part IV</i>		X
c An entity of which a current or former officer, director, trustee, or key employee (or a family member thereof) was an officer, director, trustee, or direct or indirect owner? <i>If "Yes," complete Schedule L, Part IV</i>		X
29 Did the organization receive more than \$25,000 in non-cash contributions? <i>If "Yes," complete Schedule M</i>		X
30 Did the organization receive contributions of art, historical treasures, or other similar assets, or qualified conservation contributions? <i>If "Yes," complete Schedule M</i>		X
31 Did the organization liquidate, terminate, or dissolve and cease operations? <i>If "Yes," complete Schedule N, Part I</i>		X
32 Did the organization sell, exchange, dispose of, or transfer more than 25% of its net assets? <i>If "Yes," complete Schedule N, Part II</i>		X
33 Did the organization own 100% of an entity disregarded as separate from the organization under Regulations sections 301.7701-2 and 301.7701-3? <i>If "Yes," complete Schedule R, Part I</i>		X
34 Was the organization related to any tax-exempt or taxable entity? <i>If "Yes," complete Schedule R, Parts II, III, IV, and V, line 1</i>		X
35a Did the organization have a controlled entity within the meaning of section 512(b)(13)?		X
b Did the organization receive any payment from or engage in any transaction with a controlled entity within the meaning of section 512(b)(13)? <i>If "Yes," complete Schedule R, Part V, line 2</i>		X
36 Section 501(c)(3) organizations. Did the organization make any transfers to an exempt non-charitable related organization? <i>If "Yes," complete Schedule R, Part V, line 2</i>		X
37 Did the organization conduct more than 5% of its activities through an entity that is not a related organization and that is treated as a partnership for federal income tax purposes? <i>If "Yes," complete Schedule R, Part VI</i>		X
38 Did the organization complete Schedule O and provide explanations in Schedule O for Part VI, lines 11 and 19? Note. All Form 990 filers are required to complete Schedule O	X	

Part V Statements Regarding Other IRS Filings and Tax Compliance

Check if Schedule O contains a response to any question in this Part V

Input box for Schedule O response

Main table with columns for question number, description, and Yes/No checkboxes. Includes rows 1a-14b with various tax-related questions.

Part VI Governance, Management, and Disclosure For each "Yes" response to lines 2 through 7b below, and for a "No" response to line 8a, 8b, or 10b below, describe the circumstances, processes, or changes in Schedule O. See instructions.

Check if Schedule O contains a response to any question in this Part VI [X]

Section A. Governing Body and Management

Table with 3 columns: Question, Yes, No. Rows include: 1a (16), 1b (16), 2 (X), 3 (X), 4 (X), 5 (X), 6 (X), 7a (X), 7b (X), 8a (X), 8b (X), 9 (X).

Section B. Policies (This Section B requests information about policies not required by the Internal Revenue Code.)

Table with 3 columns: Question, Yes, No. Rows include: 10a (X), 10b (X), 11a (X), 12a (X), 12b (X), 12c (X), 13 (X), 14 (X), 15a (X), 15b (X), 16a (X), 16b.

Section C. Disclosure

- 17 List the states with which a copy of this Form 990 is required to be filed NONE
18 Section 6104 requires an organization to make its Forms 1023 (or 1024 if applicable), 990, and 990-T (Section 501(c)(3)s only) available for public inspection. Indicate how you made these available. Check all that apply. [X] Own website [] Another's website [X] Upon request
19 Describe in Schedule O whether (and if so, how), the organization made its governing documents, conflict of interest policy, and financial statements available to the public during the tax year.
20 State the name, physical address, and telephone number of the person who possesses the books and records of the organization: NATIONAL ASSOCIATION FOR INTERPRETA - 970-484-8283 230 CHERRY STREET, FORT COLLINS, CO 80522

Part VII Compensation of Officers, Directors, Trustees, Key Employees, Highest Compensated Employees, and Independent Contractors

Check if Schedule O contains a response to any question in this Part VII

Section A. Officers, Directors, Trustees, Key Employees, and Highest Compensated Employees

1a Complete this table for all persons required to be listed. Report compensation for the calendar year ending with or within the organization's tax year.

- List all of the organization's **current** officers, directors, trustees (whether individuals or organizations), regardless of amount of compensation. Enter -0- in columns (D), (E), and (F) if no compensation was paid.
- List all of the organization's **current** key employees, if any. See instructions for definition of "key employee."
- List the organization's five **current** highest compensated employees (other than an officer, director, trustee, or key employee) who received reportable compensation (Box 5 of Form W-2 and/or Box 7 of Form 1099-MISC) of more than \$100,000 from the organization and any related organizations.
- List all of the organization's **former** officers, key employees, and highest compensated employees who received more than \$100,000 of reportable compensation from the organization and any related organizations.
- List all of the organization's **former directors or trustees** that received, in the capacity as a former director or trustee of the organization, more than \$10,000 of reportable compensation from the organization and any related organizations.

List persons in the following order: individual trustees or directors; institutional trustees; officers; key employees; highest compensated employees; and former such persons.

Check this box if neither the organization nor any related organization compensated any current officer, director, or trustee.

(A) Name and Title	(B) Average hours per week (describe hours for related organizations in Schedule O)	(C) Position (do not check more than one box, unless person is both an officer and a director/trustee)						(D) Reportable compensation from the organization (W-2/1099-MISC)	(E) Reportable compensation from related organizations (W-2/1099-MISC)	(F) Estimated amount of other compensation from the organization and related organizations
		Individual trustee or director	Institutional trustee	Officer	Key employee	Highest compensated employee	Former			
(1) JIM COVEL PRESIDENT	7.10	X		X				0.	0.	0.
(2) AMY LETHBRIDGE VP ADMINISTRATION	10.00	X		X				0.	0.	0.
(3) JOHN C.F. LUZADER VP PROGRAMS	17.70	X		X				0.	0.	0.
(4) THERESA COBLE TREASURER	9.50	X		X				0.	0.	0.
(5) AMY GALPERIN SECRETARY	2.00	X		X				0.	0.	0.
(6) K.C. DENDOOVEN AT-LARGE REPRESENTATIVES	2.00	X						0.	0.	0.
(7) AMY FORD BURNETT REG. LEADERSHIP COUNCIL	10.00	X						0.	0.	0.
(8) TRAVIS WILLIAMS SECTION LEADERSHIP COUNCIL	2.10	X						0.	0.	0.
(9) DAVID KNOTTS AT-LARGE REPRESENTATIVES	4.50	X						0.	0.	0.
(10) MIKE WATLEY AT-LARGE REPRESENTATIVES	5.00	X						0.	0.	0.
(11) TOM MULLIN REG. LEADERSHIP COUNCIL	10.60	X						0.	0.	0.
(12) JOHN MILLER REG. LEADERSHIP COUNCIL	2.00	X						0.	0.	0.
(13) KEVIN DAMSTRA REG. LEADERSHIP COUNCIL	14.00	X						0.	0.	0.
(14) TODD BRIDGEWATER SECTION LEADERSHIP COUNCIL	7.50	X						0.	0.	0.
(15) DUANE FAST SECTION LEADERSHIP COUNCIL	13.80	X						0.	0.	0.
(16) SHEA LEWIS SECTION LEADERSHIP COUNCIL	1.50	X						0.	0.	0.
(17) TIM MERRIMAN EXECUTIVE DIRECTOR	48.00			X				117,404.	0.	16,524.

Part VII Section A. Officers, Directors, Trustees, Key Employees, and Highest Compensated Employees (continued)

(A) Name and title	(B) Average hours per week (describe hours for related organizations in Schedule O)	(C) Position (do not check more than one box, unless person is both an officer and a director/trustee)						(D) Reportable compensation from the organization (W-2/1099-MISC)	(E) Reportable compensation from related organizations (W-2/1099-MISC)	(F) Estimated amount of other compensation from the organization and related organizations
		Individual trustee or director	Institutional trustee	Officer	Key employee	Highest compensated employee	Former			
1b Sub-total								117,404.	0.	16,524.
c Total from continuation sheets to Part VII, Section A								0.	0.	0.
d Total (add lines 1b and 1c)								117,404.	0.	16,524.

2 Total number of individuals (including but not limited to those listed above) who received more than \$100,000 of reportable compensation from the organization **▶** **1**

	Yes	No
3 Did the organization list any former officer, director, or trustee, key employee, or highest compensated employee on line 1a? <i>If "Yes," complete Schedule J for such individual</i>		X
4 For any individual listed on line 1a, is the sum of reportable compensation and other compensation from the organization and related organizations greater than \$150,000? <i>If "Yes," complete Schedule J for such individual</i>		X
5 Did any person listed on line 1a receive or accrue compensation from any unrelated organization or individual for services rendered to the organization? <i>If "Yes," complete Schedule J for such person</i>		X

Section B. Independent Contractors

1 Complete this table for your five highest compensated independent contractors that received more than \$100,000 of compensation from the organization. Report compensation for the calendar year ending with or within the organization's tax year.

(A) Name and business address	(B) Description of services	(C) Compensation
NONE		
2 Total number of independent contractors (including but not limited to those listed above) who received more than \$100,000 of compensation from the organization ▶		0

Part VIII Statement of Revenue

			(A) Total revenue	(B) Related or exempt function revenue	(C) Unrelated business revenue	(D) Revenue excluded from tax under sections 512, 513, or 514	
Contributions, Gifts, Grants and Other Similar Amounts	1 a	Federated campaigns					
	b	Membership dues					
	c	Fundraising events	1,977.				
	d	Related organizations					
	e	Government grants (contributions)					
	f	All other contributions, gifts, grants, and similar amounts not included above	153,264.				
	g	Noncash contributions included in lines 1a-1f: \$	1,022.				
	h	Total. Add lines 1a-1f	155,241.				
	Program Service Revenue	2 a	MEMBERSHIP DUES AND PU	900099	692,514.	692,514.	
b		WORKSHOP REVENUE	900099	529,112.	529,112.		
c							
d							
e							
f		All other program service revenue					
g		Total. Add lines 2a-2f		1,221,626.			
Other Revenue	3	Investment income (including dividends, interest, and other similar amounts)		1,937.	1,937.		
	4	Income from investment of tax-exempt bond proceeds					
	5	Royalties					
	6 a	Gross rents	(i) Real	48,760.			
		Less: rental expenses	(ii) Personal	72,092.			
		Rental income or (loss)		-23,332.			
	d	Net rental income or (loss)		-23,332.	-10,301.	-13,031.	
	7 a	Gross amount from sales of assets other than inventory	(i) Securities	101,670.			
		Less: cost or other basis and sales expenses	(ii) Other	107,582.			
		Gain or (loss)		-5,912.			
		Net gain or (loss)		-5,912.			-5,912.
	8 a	Gross income from fundraising events (not including \$ 1,977. of contributions reported on line 1c). See Part IV, line 18	a	0.			
		Less: direct expenses	b	0.			
		Net income or (loss) from fundraising events		0.			
	9 a	Gross income from gaming activities. See Part IV, line 19	a				
Less: direct expenses		b					
Net income or (loss) from gaming activities							
10 a	Gross sales of inventory, less returns and allowances	a					
	Less: cost of goods sold	b					
	Net income or (loss) from sales of inventory						
Miscellaneous Revenue			Business Code				
11 a	ADVERTISING INCOME	511190	56,450.		56,450.		
b	MISCELLANEOUS INCOME	900099	1,299.	1,299.			
c							
d	All other revenue						
e	Total. Add lines 11a-11d		57,749.				
12	Total revenue. See instructions.		1,407,309.	1,224,862.	46,149.	-18,943.	

Part IX Statement of Functional Expenses

Section 501(c)(3) and 501(c)(4) organizations must complete all columns. All other organizations must complete column (A) but are not required to complete columns (B), (C), and (D).

Check if Schedule O contains a response to any question in this Part IX

Do not include amounts reported on lines 6b, 7b, 8b, 9b, and 10b of Part VIII.	(A) Total expenses	(B) Program service expenses	(C) Management and general expenses	(D) Fundraising expenses
1 Grants and other assistance to governments and organizations in the United States. See Part IV, line 21	7,488.	7,488.		
2 Grants and other assistance to individuals in the United States. See Part IV, line 22	38,118.	38,118.		
3 Grants and other assistance to governments, organizations, and individuals outside the United States. See Part IV, lines 15 and 16	3,000.	3,000.		
4 Benefits paid to or for members				
5 Compensation of current officers, directors, trustees, and key employees	117,404.	99,793.	16,437.	1,174.
6 Compensation not included above, to disqualified persons (as defined under section 4958(f)(1)) and persons described in section 4958(c)(3)(B)				
7 Other salaries and wages	345,062.	293,302.	48,309.	3,451.
8 Pension plan accruals and contributions (include section 401(k) and section 403(b) employer contributions)				
9 Other employee benefits	122,685.	104,282.	17,176.	1,227.
10 Payroll taxes	37,336.	31,735.	5,601.	
11 Fees for services (non-employees):				
a Management				
b Legal	2,165.	2,165.		
c Accounting	12,500.	10,625.	1,750.	125.
d Lobbying				
e Professional fundraising services. See Part IV, line 17				
f Investment management fees				
g Other				
12 Advertising and promotion	2,330.	2,330.		
13 Office expenses	62,839.	57,783.	4,448.	608.
14 Information technology				
15 Royalties				
16 Occupancy	34,156.	31,448.	2,105.	603.
17 Travel	60,937.	57,260.	3,488.	189.
18 Payments of travel or entertainment expenses for any federal, state, or local public officials				
19 Conferences, conventions, and meetings				
20 Interest	14,892.	12,658.	2,085.	149.
21 Payments to affiliates				
22 Depreciation, depletion, and amortization	14,549.	12,367.	2,182.	
23 Insurance				
24 Other expenses. Itemize expenses not covered above. (List miscellaneous expenses in line 24e. If line 24e amount exceeds 10% of line 25, column (A) amount, list line 24e expenses on Schedule O.)				
a WORKSHOPS	263,342.	263,342.		
b MEMBER SERVICES	119,927.	119,927.		
c BANK AND CREDIT CARD FE	34,455.	28,942.	5,168.	345.
d ALL OTHER EXPENSES	11,766.	10,907.	859.	
e All other expenses	2,822.	2,399.	423.	
25 Total functional expenses. Add lines 1 through 24e	1,307,773.	1,189,871.	110,031.	7,871.
26 Joint costs. Complete this line only if the organization reported in column (B) joint costs from a combined educational campaign and fundraising solicitation. Check here <input type="checkbox"/> if following SOP 98-2 (ASC 958-720)				

Part X Balance Sheet

		(A) Beginning of year		(B) End of year	
Assets	1 Cash - non-interest-bearing	43,964.	1	186,433.	
	2 Savings and temporary cash investments	99,995.	2	0.	
	3 Pledges and grants receivable, net	8,175.	3	6,806.	
	4 Accounts receivable, net	59,232.	4	50,116.	
	5 Receivables from current and former officers, directors, trustees, key employees, and highest compensated employees. Complete Part II of Schedule L		5		
	6 Receivables from other disqualified persons (as defined under section 4958(f)(1)), persons described in section 4958(c)(3)(B), and contributing employers and sponsoring organizations of section 501(c)(9) voluntary employees' beneficiary organizations (see instructions)		6		
	7 Notes and loans receivable, net		7		
	8 Inventories for sale or use	181,587.	8	161,760.	
	9 Prepaid expenses and deferred charges		9		
	10a Land, buildings, and equipment: cost or other basis. Complete Part VI of Schedule D	10a 1,234,645.			
	b Less: accumulated depreciation	10b 312,936.	949,742.	10c	921,709.
	11 Investments - publicly traded securities		11		
	12 Investments - other securities. See Part IV, line 11		12		
	13 Investments - program-related. See Part IV, line 11		13		
	14 Intangible assets		14	73,482.	
	15 Other assets. See Part IV, line 11	3,412.	15	3,315.	
16 Total assets. Add lines 1 through 15 (must equal line 34)	1,346,107.	16	1,403,621.		
Liabilities	17 Accounts payable and accrued expenses	76,480.	17	17,260.	
	18 Grants payable		18		
	19 Deferred revenue	329,452.	19	322,649.	
	20 Tax-exempt bond liabilities		20		
	21 Escrow or custodial account liability. Complete Part IV of Schedule D		21		
	22 Payables to current and former officers, directors, trustees, key employees, highest compensated employees, and disqualified persons. Complete Part II of Schedule L		22		
	23 Secured mortgages and notes payable to unrelated third parties	567,544.	23	585,931.	
	24 Unsecured notes and loans payable to unrelated third parties		24		
	25 Other liabilities (including federal income tax, payables to related third parties, and other liabilities not included on lines 17-24). Complete Part X of Schedule D	82,856.	25	82,517.	
	26 Total liabilities. Add lines 17 through 25	1,056,332.	26	1,008,357.	
Net Assets or Fund Balances	Organizations that follow SFAS 117, check here <input checked="" type="checkbox"/> and complete lines 27 through 29, and lines 33 and 34.				
	27 Unrestricted net assets	-493,744.	27	-190,255.	
	28 Temporarily restricted net assets	200,000.	28	2,000.	
	29 Permanently restricted net assets	583,519.	29	583,519.	
	Organizations that do not follow SFAS 117, check here <input type="checkbox"/> and complete lines 30 through 34.				
	30 Capital stock or trust principal, or current funds		30		
	31 Paid-in or capital surplus, or land, building, or equipment fund		31		
	32 Retained earnings, endowment, accumulated income, or other funds		32		
	33 Total net assets or fund balances	289,775.	33	395,264.	
34 Total liabilities and net assets/fund balances	1,346,107.	34	1,403,621.		

Part XI Reconciliation of Net Assets

Check if Schedule O contains a response to any question in this Part XI

1	Total revenue (must equal Part VIII, column (A), line 12)	1	1,407,309.
2	Total expenses (must equal Part IX, column (A), line 25)	2	1,307,773.
3	Revenue less expenses. Subtract line 2 from line 1	3	99,536.
4	Net assets or fund balances at beginning of year (must equal Part X, line 33, column (A))	4	289,775.
5	Other changes in net assets or fund balances (explain in Schedule O)	5	5,953.
6	Net assets or fund balances at end of year. Combine lines 3, 4, and 5 (must equal Part X, line 33, column (B))	6	395,264.

Part XII Financial Statements and Reporting

Check if Schedule O contains a response to any question in this Part XII

		Yes	No
1	Accounting method used to prepare the Form 990: <input type="checkbox"/> Cash <input checked="" type="checkbox"/> Accrual <input type="checkbox"/> Other _____ If the organization changed its method of accounting from a prior year or checked "Other," explain in Schedule O.		
2a	Were the organization's financial statements compiled or reviewed by an independent accountant?		X
2b	Were the organization's financial statements audited by an independent accountant?	X	
2c	If "Yes" to line 2a or 2b, does the organization have a committee that assumes responsibility for oversight of the audit, review, or compilation of its financial statements and selection of an independent accountant? If the organization changed either its oversight process or selection process during the tax year, explain in Schedule O.	X	
d	If "Yes" to line 2a or 2b, check a box below to indicate whether the financial statements for the year were issued on a separate basis, consolidated basis, or both: <input checked="" type="checkbox"/> Separate basis <input type="checkbox"/> Consolidated basis <input type="checkbox"/> Both consolidated and separate basis		
3a	As a result of a federal award, was the organization required to undergo an audit or audits as set forth in the Single Audit Act and OMB Circular A-133?		X
3b	If "Yes," did the organization undergo the required audit or audits? If the organization did not undergo the required audit or audits, explain why in Schedule O and describe any steps taken to undergo such audits.		

Form 990 (2011)

Draft

SCHEDULE A
(Form 990 or 990-EZ)

Department of the Treasury
Internal Revenue Service

Public Charity Status and Public Support

Complete if the organization is a section 501(c)(3) organization or a section 4947(a)(1) nonexempt charitable trust.

▶ Attach to Form 990 or Form 990-EZ. ▶ See separate instructions.

OMB No. 1545-0047

2011

Open to Public Inspection

Name of the organization NATIONAL ASSOCIATION FOR INTERPRETATION	Employer identification number 84-1036938
--	---

Part I Reason for Public Charity Status (All organizations must complete this part.) See instructions.

The organization is not a private foundation because it is: (For lines 1 through 11, check only one box.)

- 1 A church, convention of churches, or association of churches described in **section 170(b)(1)(A)(i)**.
- 2 A school described in **section 170(b)(1)(A)(ii)**. (Attach Schedule E.)
- 3 A hospital or a cooperative hospital service organization described in **section 170(b)(1)(A)(iii)**.
- 4 A medical research organization operated in conjunction with a hospital described in **section 170(b)(1)(A)(iii)**. Enter the hospital's name, city, and state: _____
- 5 An organization operated for the benefit of a college or university owned or operated by a governmental unit described in **section 170(b)(1)(A)(iv)**. (Complete Part II.)
- 6 A federal, state, or local government or governmental unit described in **section 170(b)(1)(A)(v)**.
- 7 An organization that normally receives a substantial part of its support from a governmental unit or from the general public described in **section 170(b)(1)(A)(vi)**. (Complete Part II.)
- 8 A community trust described in **section 170(b)(1)(A)(vi)**. (Complete Part II.)
- 9 An organization that normally receives: (1) more than 33 1/3% of its support from contributions, membership fees, and gross receipts from activities related to its exempt functions - subject to certain exceptions, and (2) no more than 33 1/3% of its support from gross investment income and unrelated business taxable income (less section 511 tax) from businesses acquired by the organization after June 30, 1975. See **section 509(a)(2)**. (Complete Part III.)
- 10 An organization organized and operated exclusively to test for public safety. See **section 509(a)(4)**.
- 11 An organization organized and operated exclusively for the benefit of, to perform the functions of, or to carry out the purposes of one or more publicly supported organizations described in section 509(a)(1) or section 509(a)(2). See **section 509(a)(3)**. Check the box that describes the type of supporting organization and complete lines 11e through 11h.
 - a Type I b Type II c Type III - Functionally integrated d Type III - Other
- e By checking this box, I certify that the organization is not controlled directly or indirectly by one or more disqualified persons other than foundation managers and other than one or more publicly supported organizations described in section 509(a)(1) or section 509(a)(2).
- f If the organization received a written determination from the IRS that it is a Type I, Type II, or Type III supporting organization, check this box
- g Since August 17, 2006, has the organization accepted any gift or contribution from any of the following persons?

	Yes	No
(i) A person who directly or indirectly controls, either alone or together with persons described in (ii) and (iii) below, the governing body of the supported organization?	11g(i)	
(ii) A family member of a person described in (i) above?	11g(ii)	
(iii) A 35% controlled entity of a person described in (i) or (ii) above?	11g(iii)	
- h Provide the following information about the supported organization(s).

(i) Name of supported organization	(ii) EIN	(iii) Type of organization (described on lines 1-9 above or IRC section (see instructions))	(iv) Is the organization in col. (i) listed in your governing document?		(v) Did you notify the organization in col. (i) of your support?		(vi) Is the organization in col. (i) organized in the U.S.?		(vii) Amount of support
			Yes	No	Yes	No	Yes	No	
Total									

Part II Support Schedule for Organizations Described in Sections 170(b)(1)(A)(iv) and 170(b)(1)(A)(vi)

(Complete only if you checked the box on line 5, 7, or 8 of Part I or if the organization failed to qualify under Part III. If the organization fails to qualify under the tests listed below, please complete Part III.)

Section A. Public Support

Calendar year (or fiscal year beginning in) ▶	(a) 2007	(b) 2008	(c) 2009	(d) 2010	(e) 2011	(f) Total
1 Gifts, grants, contributions, and membership fees received. (Do not include any "unusual grants.")						
2 Tax revenues levied for the organization's benefit and either paid to or expended on its behalf						
3 The value of services or facilities furnished by a governmental unit to the organization without charge						
4 Total. Add lines 1 through 3						
5 The portion of total contributions by each person (other than a governmental unit or publicly supported organization) included on line 1 that exceeds 2% of the amount shown on line 11, column (f)						
6 Public support. Subtract line 5 from line 4.						

Section B. Total Support

Calendar year (or fiscal year beginning in) ▶	(a) 2007	(b) 2008	(c) 2009	(d) 2010	(e) 2011	(f) Total
7 Amounts from line 4						
8 Gross income from interest, dividends, payments received on securities loans, rents, royalties and income from similar sources						
9 Net income from unrelated business activities, whether or not the business is regularly carried on						
10 Other income. Do not include gain or loss from the sale of capital assets (Explain in Part IV.)						
11 Total support. Add lines 7 through 10						
12 Gross receipts from related activities, etc. (see instructions)					12	
13 First five years. If the Form 990 is for the organization's first, second, third, fourth, or fifth tax year as a section 501(c)(3) organization, check this box and stop here						<input type="checkbox"/>

Section C. Computation of Public Support Percentage

14 Public support percentage for 2011 (line 6, column (f) divided by line 11, column (f))	14	%
15 Public support percentage from 2010 Schedule A, Part II, line 14	15	%
16a 33 1/3% support test - 2011. If the organization did not check the box on line 13, and line 14 is 33 1/3% or more, check this box and stop here. The organization qualifies as a publicly supported organization		<input type="checkbox"/>
b 33 1/3% support test - 2010. If the organization did not check a box on line 13 or 16a, and line 15 is 33 1/3% or more, check this box and stop here. The organization qualifies as a publicly supported organization		<input type="checkbox"/>
17a 10% -facts-and-circumstances test - 2011. If the organization did not check a box on line 13, 16a, or 16b, and line 14 is 10% or more, and if the organization meets the "facts-and-circumstances" test, check this box and stop here. Explain in Part IV how the organization meets the "facts-and-circumstances" test. The organization qualifies as a publicly supported organization		<input type="checkbox"/>
b 10% -facts-and-circumstances test - 2010. If the organization did not check a box on line 13, 16a, 16b, or 17a, and line 15 is 10% or more, and if the organization meets the "facts-and-circumstances" test, check this box and stop here. Explain in Part IV how the organization meets the "facts-and-circumstances" test. The organization qualifies as a publicly supported organization		<input type="checkbox"/>
18 Private foundation. If the organization did not check a box on line 13, 16a, 16b, 17a, or 17b, check this box and see instructions		<input type="checkbox"/>

Part III Support Schedule for Organizations Described in Section 509(a)(2)

(Complete only if you checked the box on line 9 of Part I or if the organization failed to qualify under Part II. If the organization fails to qualify under the tests listed below, please complete Part II.)

Section A. Public Support

Calendar year (or fiscal year beginning in) ▶	(a) 2007	(b) 2008	(c) 2009	(d) 2010	(e) 2011	(f) Total
1 Gifts, grants, contributions, and membership fees received. (Do not include any "unusual grants.")	486,335.	411,424.	406,034.	384,656.	458,060.	2146509.
2 Gross receipts from admissions, merchandise sold or services performed, or facilities furnished in any activity that is related to the organization's tax-exempt purpose	1003301.	1237967.	963,198.	1085684.	951,670.	5241820.
3 Gross receipts from activities that are not an unrelated trade or business under section 513						
4 Tax revenues levied for the organization's benefit and either paid to or expended on its behalf						
5 The value of services or facilities furnished by a governmental unit to the organization without charge						
6 Total. Add lines 1 through 5	1489636.	1649391.	1369232.	1470340.	1409730.	7388329.
7a Amounts included on lines 1, 2, and 3 received from disqualified persons						0.
b Amounts included on lines 2 and 3 received from other than disqualified persons that exceed the greater of \$5,000 or 1% of the amount on line 13 for the year					85,870.	85,870.
c Add lines 7a and 7b					85,870.	85,870.
8 Public support (Subtract line 7c from line 6.)						7302459.

Section B. Total Support

Calendar year (or fiscal year beginning in) ▶	(a) 2007	(b) 2008	(c) 2009	(d) 2010	(e) 2011	(f) Total
9 Amounts from line 6	1489636.	1649391.	1369232.	1470340.	1409730.	7388329.
10a Gross income from interest, dividends, payments received on securities loans, rents, royalties and income from similar sources	16,496.	5,124.	3,118.	4,418.	1,937.	31,093.
b Unrelated business taxable income (less section 511 taxes) from businesses acquired after June 30, 1975						
c Add lines 10a and 10b	16,496.	5,124.	3,118.	4,418.	1,937.	31,093.
11 Net income from unrelated business activities not included in line 10b, whether or not the business is regularly carried on						
12 Other income. Do not include gain or loss from the sale of capital assets (Explain in Part IV.)	3,217.	2,457.	5,007.	2,711.	1,299.	14,691.
13 Total support (Add lines 9, 10c, 11, and 12.)	1509349.	1656972.	1377357.	1477469.	1412966.	7434113.

14 First five years. If the Form 990 is for the organization's first, second, third, fourth, or fifth tax year as a section 501(c)(3) organization, check this box and **stop here**

Section C. Computation of Public Support Percentage

15 Public support percentage for 2011 (line 8, column (f) divided by line 13, column (f))	15	98.23 %
16 Public support percentage from 2010 Schedule A, Part III, line 15	16	94.41 %

Section D. Computation of Investment Income Percentage

17 Investment income percentage for 2011 (line 10c, column (f) divided by line 13, column (f))	17	.42 %
18 Investment income percentage from 2010 Schedule A, Part III, line 17	18	.40 %

19a 33 1/3% support tests - 2011. If the organization did not check the box on line 14, and line 15 is more than 33 1/3%, and line 17 is not more than 33 1/3%, check this box and **stop here**. The organization qualifies as a publicly supported organization

b 33 1/3% support tests - 2010. If the organization did not check a box on line 14 or line 19a, and line 16 is more than 33 1/3%, and line 18 is not more than 33 1/3%, check this box and **stop here**. The organization qualifies as a publicly supported organization

20 Private foundation. If the organization did not check a box on line 14, 19a, or 19b, check this box and see instructions

Part IV **Supplemental Information.** Complete this part to provide the explanations required by Part II, line 10; Part II, line 17a or 17b; and Part III, line 12. Also complete this part for any additional information. (See instructions).

SCHEDULE A, PART III, LINE 12, EXPLANATION FOR OTHER INCOME:

MISCELLANEOUS INCOME

Draft

Schedule B
(Form 990, 990-EZ,
or 990-PF)

Department of the Treasury
Internal Revenue Service

Schedule of Contributors

▶ Attach to Form 990, Form 990-EZ, or Form 990-PF.

OMB No. 1545-0047

2011

Name of the organization

Employer identification number

NATIONAL ASSOCIATION FOR INTERPRETATION

84-1036938

Organization type (check one):

Filers of:

Section:

Form 990 or 990-EZ

501(c)(3) (enter number) organization

4947(a)(1) nonexempt charitable trust **not** treated as a private foundation

527 political organization

Form 990-PF

501(c)(3) exempt private foundation

4947(a)(1) nonexempt charitable trust treated as a private foundation

501(c)(3) taxable private foundation

Check if your organization is covered by the **General Rule** or a **Special Rule**.

Note. Only a section 501(c)(7), (8), or (10) organization can check boxes for both the General Rule and a Special Rule. See instructions.

General Rule

For an organization filing Form 990, 990-EZ, or 990-PF that received, during the year, \$5,000 or more (in money or property) from any one contributor. Complete Parts I and II.

Special Rules

For a section 501(c)(3) organization filing Form 990 or 990-EZ that met the 33 1/3% support test of the regulations under sections 509(a)(1) and 170(b)(1)(A)(vi) and received from any one contributor, during the year, a contribution of the greater of (1) \$5,000 or (2) 2% of the amount on (i) Form 990, Part VIII, line 1h, or (ii) Form 990-EZ, line 1. Complete Parts I and II.

For a section 501(c)(7), (8), or (10) organization filing Form 990 or 990-EZ that received from any one contributor, during the year, total contributions of more than \$1,000 for use *exclusively* for religious, charitable, scientific, literary, or educational purposes, or the prevention of cruelty to children or animals. Complete Parts I, II, and III.

For a section 501(c)(7), (8), or (10) organization filing Form 990 or 990-EZ that received from any one contributor, during the year, contributions for use *exclusively* for religious, charitable, etc., purposes, but these contributions did not total to more than \$1,000. If this box is checked, enter here the total contributions that were received during the year for an *exclusively* religious, charitable, etc., purpose. Do not complete any of the parts unless the **General Rule** applies to this organization because it received nonexclusively religious, charitable, etc., contributions of \$5,000 or more during the year. ▶ \$ _____

Caution. An organization that is not covered by the General Rule and/or the Special Rules does not file Schedule B (Form 990, 990-EZ, or 990-PF), but it **must** answer "No" on Part IV, line 2, of its Form 990; or check the box on line H of its Form 990-EZ or on Part I, line 2 of its Form 990-PF, to certify that it does not meet the filing requirements of Schedule B (Form 990, 990-EZ, or 990-PF).

LHA For Paperwork Reduction Act Notice, see the Instructions for Form 990, 990-EZ, or 990-PF. Schedule B (Form 990, 990-EZ, or 990-PF) (2011)

Name of organization NATIONAL ASSOCIATION FOR INTERPRETATION	Employer identification number 84-1036938
--	---

Part I Contributors (see instructions). Use duplicate copies of Part I if additional space is needed.

(a) No.	(b) Name, address, and ZIP + 4	(c) Total contributions	(d) Type of contribution
1	<u>MICHAEL & MARYANN BEST</u> <u>420 GEORGE GRAY LANE</u> <u>WALESKA, GA 30183</u>	\$ <u>1,022.</u>	Person <input type="checkbox"/> Payroll <input type="checkbox"/> Noncash <input checked="" type="checkbox"/> (Complete Part II if there is a noncash contribution.)
2	<u>DOUGLAS B MCHENRY TRUST</u> <u>301 LINDEN PONDS WAY APT 318</u> <u>HINGHAM, MA 02043</u>	\$ <u>100,000.</u>	Person <input checked="" type="checkbox"/> Payroll <input type="checkbox"/> Noncash <input type="checkbox"/> (Complete Part II if there is a noncash contribution.)
_____	_____ _____ _____	\$ _____	Person <input type="checkbox"/> Payroll <input type="checkbox"/> Noncash <input type="checkbox"/> (Complete Part II if there is a noncash contribution.)
_____	_____ _____ _____	\$ _____	Person <input type="checkbox"/> Payroll <input type="checkbox"/> Noncash <input type="checkbox"/> (Complete Part II if there is a noncash contribution.)
_____	_____ _____ _____	\$ _____	Person <input type="checkbox"/> Payroll <input type="checkbox"/> Noncash <input type="checkbox"/> (Complete Part II if there is a noncash contribution.)
_____	_____ _____ _____	\$ _____	Person <input type="checkbox"/> Payroll <input type="checkbox"/> Noncash <input type="checkbox"/> (Complete Part II if there is a noncash contribution.)
_____	_____ _____ _____	\$ _____	Person <input type="checkbox"/> Payroll <input type="checkbox"/> Noncash <input type="checkbox"/> (Complete Part II if there is a noncash contribution.)

Name of organization NATIONAL ASSOCIATION FOR INTERPRETATION	Employer identification number 84-1036938
--	---

Part II Noncash Property (see instructions). Use duplicate copies of Part II if additional space is needed.

(a) No. from Part I	(b) Description of noncash property given	(c) FMV (or estimate) (see instructions)	(d) Date received
1	5,000 SHARES AMAZON COM, INC STOCK _____ _____ _____	\$ 1,022.	06/30/11
_____	_____ _____ _____	\$ _____	_____
_____	_____ _____ _____	\$ _____	_____
_____	_____ _____ _____	\$ _____	_____
_____	_____ _____ _____	\$ _____	_____
_____	_____ _____ _____	\$ _____	_____
_____	_____ _____ _____	\$ _____	_____

Name of organization NATIONAL ASSOCIATION FOR INTERPRETATION	Employer identification number 84-1036938
--	---

Part III Exclusively religious, charitable, etc., individual contributions to section 501(c)(7), (8), or (10) organizations that total more than \$1,000 for the year. Complete columns (a) through (e) and the following line entry. For organizations completing Part III, enter the total of exclusively religious, charitable, etc., contributions of \$1,000 or less for the year. (Enter this information once.) ▶ \$ _____
Use duplicate copies of Part III if additional space is needed.

(a) No. from Part I	(b) Purpose of gift	(c) Use of gift	(d) Description of how gift is held
_____	_____ _____ _____	_____ _____ _____	_____ _____ _____
(e) Transfer of gift			
Transferee's name, address, and ZIP + 4		Relationship of transferor to transferee	
_____ _____ _____		_____ _____ _____	
_____	_____ _____ _____	_____ _____ _____	_____ _____ _____
(e) Transfer of gift			
Transferee's name, address, and ZIP + 4		Relationship of transferor to transferee	
_____ _____ _____		_____ _____ _____	
_____	_____ _____ _____	_____ _____ _____	_____ _____ _____
(e) Transfer of gift			
Transferee's name, address, and ZIP + 4		Relationship of transferor to transferee	
_____ _____ _____		_____ _____ _____	
_____	_____ _____ _____	_____ _____ _____	_____ _____ _____
(e) Transfer of gift			
Transferee's name, address, and ZIP + 4		Relationship of transferor to transferee	
_____ _____ _____		_____ _____ _____	
_____	_____ _____ _____	_____ _____ _____	_____ _____ _____
(e) Transfer of gift			
Transferee's name, address, and ZIP + 4		Relationship of transferor to transferee	
_____ _____ _____		_____ _____ _____	
_____	_____ _____ _____	_____ _____ _____	_____ _____ _____
(e) Transfer of gift			
Transferee's name, address, and ZIP + 4		Relationship of transferor to transferee	
_____ _____ _____		_____ _____ _____	

SCHEDULE D
(Form 990)

Department of the Treasury
Internal Revenue Service

Supplemental Financial Statements

▶ **Complete if the organization answered "Yes," to Form 990, Part IV, line 6, 7, 8, 9, 10, 11a, 11b, 11c, 11d, 11e, 11f, 12a, or 12b.**

▶ **Attach to Form 990. ▶ See separate instructions.**

OMB No. 1545-0047

2011

Open to Public Inspection

Name of the organization

NATIONAL ASSOCIATION FOR INTERPRETATION

Employer identification number

84-1036938

Part I Organizations Maintaining Donor Advised Funds or Other Similar Funds or Accounts. Complete if the organization answered "Yes" to Form 990, Part IV, line 6.

	(a) Donor advised funds	(b) Funds and other accounts
1 Total number at end of year		
2 Aggregate contributions to (during year)		
3 Aggregate grants from (during year)		
4 Aggregate value at end of year		
5 Did the organization inform all donors and donor advisors in writing that the assets held in donor advised funds are the organization's property, subject to the organization's exclusive legal control?		<input type="checkbox"/> Yes <input type="checkbox"/> No
6 Did the organization inform all grantees, donors, and donor advisors in writing that grant funds can be used only for charitable purposes and not for the benefit of the donor or donor advisor, or for any other purpose conferring impermissible private benefit?		<input type="checkbox"/> Yes <input type="checkbox"/> No

Part II Conservation Easements. Complete if the organization answered "Yes" to Form 990, Part IV, line 7.

1 Purpose(s) of conservation easements held by the organization (check all that apply).

Preservation of land for public use (e.g., recreation or education) Preservation of an historically important land area

Protection of natural habitat Preservation of a certified historic structure

Preservation of open space

2 Complete lines 2a through 2d if the organization held a qualified conservation contribution in the form of a conservation easement on the last day of the tax year.

	Held at the End of the Tax Year
a Total number of conservation easements	2a
b Total acreage restricted by conservation easements	2b
c Number of conservation easements on a certified historic structure included in (a)	2c
d Number of conservation easements included in (c) acquired after 8/17/06, and not on a historic structure listed in the National Register	2d

3 Number of conservation easements modified, transferred, released, extinguished, or terminated by the organization during the tax year ▶ _____

4 Number of states where property subject to conservation easement is located ▶ _____

5 Does the organization have a written policy regarding the periodic monitoring, inspection, handling of violations, and enforcement of the conservation easements it holds?

Yes No

6 Staff and volunteer hours devoted to monitoring, inspecting, and enforcing conservation easements during the year ▶ _____

7 Amount of expenses incurred in monitoring, inspecting, and enforcing conservation easements during the year ▶ \$ _____

8 Does each conservation easement reported on line 2(d) above satisfy the requirements of section 170(h)(4)(B)(i) and section 170(h)(4)(B)(ii)?

Yes No

9 In Part XIV, describe how the organization reports conservation easements in its revenue and expense statement, and balance sheet, and include, if applicable, the text of the footnote to the organization's financial statements that describes the organization's accounting for conservation easements.

Part III Organizations Maintaining Collections of Art, Historical Treasures, or Other Similar Assets.

Complete if the organization answered "Yes" to Form 990, Part IV, line 8.

1a If the organization elected, as permitted under SFAS 116 (ASC 958), not to report in its revenue statement and balance sheet works of art, historical treasures, or other similar assets held for public exhibition, education, or research in furtherance of public service, provide, in Part XIV, the text of the footnote to its financial statements that describes these items.

b If the organization elected, as permitted under SFAS 116 (ASC 958), to report in its revenue statement and balance sheet works of art, historical treasures, or other similar assets held for public exhibition, education, or research in furtherance of public service, provide the following amounts relating to these items:

(i) Revenues included in Form 990, Part VIII, line 1

(ii) Assets included in Form 990, Part X

2 If the organization received or held works of art, historical treasures, or other similar assets for financial gain, provide the following amounts required to be reported under SFAS 116 (ASC 958) relating to these items:

a Revenues included in Form 990, Part VIII, line 1

b Assets included in Form 990, Part X

Part III Organizations Maintaining Collections of Art, Historical Treasures, or Other Similar Assets (continued)

- 3 Using the organization's acquisition, accession, and other records, check any of the following that are a significant use of its collection items (check all that apply):
- a Public exhibition
 - b Scholarly research
 - c Preservation for future generations
 - d Loan or exchange programs
 - e Other _____
- 4 Provide a description of the organization's collections and explain how they further the organization's exempt purpose in Part XIV.
- 5 During the year, did the organization solicit or receive donations of art, historical treasures, or other similar assets to be sold to raise funds rather than to be maintained as part of the organization's collection? Yes No

Part IV Escrow and Custodial Arrangements. Complete if the organization answered "Yes" to Form 990, Part IV, line 9, or reported an amount on Form 990, Part X, line 21.

- 1a Is the organization an agent, trustee, custodian or other intermediary for contributions or other assets not included on Form 990, Part X? Yes No
- b If "Yes," explain the arrangement in Part XIV and complete the following table:
- | | Amount |
|---------------------------------|-----------|
| c Beginning balance | 1c |
| d Additions during the year | 1d |
| e Distributions during the year | 1e |
| f Ending balance | 1f |
- 2a Did the organization include an amount on Form 990, Part X, line 21? Yes No
- b If "Yes," explain the arrangement in Part XIV.

Part V Endowment Funds. Complete if the organization answered "Yes" to Form 990, Part IV, line 10.

	(a) Current year	(b) Prior year	(c) Two years back	(d) Three years back	(e) Four years back
1a Beginning of year balance	583,519.	583,394.	583,395.	577,595.	
b Contributions		125.	124.	5,800.	
c Net investment earnings, gains, and losses					
d Grants or scholarships					
e Other expenditures for facilities and programs					
f Administrative expenses					
g End of year balance	583,519.	583,519.	583,519.	583,395.	

- 2 Provide the estimated percentage of the current year end balance (line 1g, column (a)) held as:
- a Board designated or quasi-endowment 0.00 %
 - b Permanent endowment 100.00 %
 - c Temporarily restricted endowment 0.00 %
- The percentages in lines 2a, 2b, and 2c should equal 100%.

- 3a Are there endowment funds not in the possession of the organization that are held and administered for the organization by:
- | | Yes | No |
|-----------------------------|--------------------------|-------------------------------------|
| (i) unrelated organizations | <input type="checkbox"/> | <input checked="" type="checkbox"/> |
| (ii) related organizations | <input type="checkbox"/> | <input checked="" type="checkbox"/> |
- b If "Yes" to 3a(ii), are the related organizations listed as required on Schedule R? Yes No

4 Describe in Part XIV the intended uses of the organization's endowment funds.

Part VI Land, Buildings, and Equipment. See Form 990, Part X, line 10.

Description of property	(a) Cost or other basis (investment)	(b) Cost or other basis (other)	(c) Accumulated depreciation	(d) Book value
1a Land	150,000.			150,000.
b Buildings	950,845.		184,729.	766,116.
c Leasehold improvements	7,879.		2,924.	4,955.
d Equipment	74,582.		73,944.	638.
e Other	51,339.		51,339.	0.
Total. Add lines 1a through 1e. (Column (d) must equal Form 990, Part X, column (B), line 10(c).)				921,709.

Part VII Investments - Other Securities. See Form 990, Part X, line 12.

(a) Description of security or category (including name of security)	(b) Book value	(c) Method of valuation: Cost or end-of-year market value
(1) Financial derivatives		
(2) Closely-held equity interests		
(3) Other		
(A)		
(B)		
(C)		
(D)		
(E)		
(F)		
(G)		
(H)		
(I)		
Total. (Col (b) must equal Form 990, Part X, col (B) line 12.) ▶		

Part VIII Investments - Program Related. See Form 990, Part X, line 13.

(a) Description of investment type	(b) Book value	(c) Method of valuation: Cost or end-of-year market value
(1)		
(2)		
(3)		
(4)		
(5)		
(6)		
(7)		
(8)		
(9)		
(10)		
Total. (Col (b) must equal Form 990, Part X, col (B) line 13.) ▶		

Part IX Other Assets. See Form 990, Part X, line 15.

(a) Description	(b) Book value
(1)	
(2)	
(3)	
(4)	
(5)	
(6)	
(7)	
(8)	
(9)	
(10)	
Total. (Column (b) must equal Form 990, Part X, col (B) line 15.) ▶	

Part X Other Liabilities. See Form 990, Part X, line 25.

1. (a) Description of liability	(b) Book value
(1) Federal income taxes	
(2) ACCRUED PAYROLL	50,719.
(3) OTHER ACCRUED TAXES	31,798.
(4)	
(5)	
(6)	
(7)	
(8)	
(9)	
(10)	
(11)	
Total. (Column (b) must equal Form 990, Part X, col (B) line 25.) ▶	82,517.

2. FIN 48 (ASC 740) Footnote. In Part XIV, provide the text of the footnote to the organization's financial statements that reports the organization's liability for uncertain tax positions under FIN 48 (ASC 740).

Part XI Reconciliation of Change in Net Assets from Form 990 to Audited Financial Statements		
1	Total revenue (Form 990, Part VIII, column (A), line 12)	1,407,309.
2	Total expenses (Form 990, Part IX, column (A), line 25)	1,307,773.
3	Excess or (deficit) for the year. Subtract line 2 from line 1	99,536.
4	Net unrealized gains (losses) on investments	6,247.
5	Donated services and use of facilities	
6	Investment expenses	
7	Prior period adjustments	
8	Other (Describe in Part XIV.)	-294.
9	Total adjustments (net). Add lines 4 through 8	5,953.
10	Excess or (deficit) for the year per audited financial statements. Combine lines 3 and 9	105,489.

Part XII Reconciliation of Revenue per Audited Financial Statements With Revenue per Return		
1	Total revenue, gains, and other support per audited financial statements	1,470,127.
2	Amounts included on line 1 but not on Form 990, Part VIII, line 12:	
a	Net unrealized gains on investments	6,247.
b	Donated services and use of facilities	
c	Recoveries of prior year grants	
d	Other (Describe in Part XIV.)	72,468.
e	Add lines 2a through 2d	78,715.
3	Subtract line 2e from line 1	1,391,412.
4	Amounts included on Form 990, Part VIII, line 12, but not on line 1:	
a	Investment expenses not included on Form 990, Part VIII, line 7b	
b	Other (Describe in Part XIV.)	15,897.
c	Add lines 4a and 4b	15,897.
5	Total revenue. Add lines 3 and 4c. (This must equal Form 990, Part I, line 12.)	1,407,309.

Part XIII Reconciliation of Expenses per Audited Financial Statements With Expenses per Return		
1	Total expenses and losses per audited financial statements	1,364,637.
2	Amounts included on line 1 but not on Form 990, Part IX, line 25:	
a	Donated services and use of facilities	
b	Prior year adjustments	
c	Other losses	
d	Other (Describe in Part XIV.)	72,761.
e	Add lines 2a through 2d	72,761.
3	Subtract line 2e from line 1	1,291,876.
4	Amounts included on Form 990, Part IX, line 25, but not on line 1:	
a	Investment expenses not included on Form 990, Part VIII, line 7b	
b	Other (Describe in Part XIV.)	15,897.
c	Add lines 4a and 4b	15,897.
5	Total expenses. Add lines 3 and 4c. (This must equal Form 990, Part I, line 18.)	1,307,773.

Part XIV Supplemental Information

Complete this part to provide the descriptions required for Part II, lines 3, 5, and 9; Part III, lines 1a and 4; Part IV, lines 1b and 2b; Part V, line 4; Part X, line 2; Part XI, line 8; Part XII, lines 2d and 4b; and Part XIII, lines 2d and 4b. Also complete this part to provide any additional information.

PART V, LINE 4: THE ASSOCIATION HAS ESTABLISHED A LEGACY TRUST FUND

AND HAS RECEIVED CONTRIBUTIONS THAT ARE CLASSIFIED AS PERMANENTLY RESTRICTED NET ASSETS TO PROVIDE A PERMANENT ENDOWMENT. THE EARNINGS ARE CONSIDERED UNRESTRICTED AND ARE TO BE USED FOR TWO PURPOSES: (1) SCHOLARSHIPS TO PROVIDE FOR THE DEVELOPMENT OF YOUNG PROFESSIONALS IN INTERPRETATION; AND (2) NAI MEMBER SERVICES AND NEW PROGRAMS.

PART X, LINE 2: THE ASSOCIATION APPLIES THE PROVISIONS OF ASC 740,

Part XIV Supplemental Information (continued)

PERTAINING TO ACCOUNTING FOR UNCERTAINTY IN INCOME TAXES. THE PRONOUNCEMENT REQUIRES THE USE OF A MORE-LIKELY-THAN-NOT RECOGNITION CRITERIA BEFORE AND SEPARATE FROM THE MEASUREMENT OF A TAX POSITION. AN ENTITY SHALL INITIALLY RECOGNIZE THE FINANCIAL STATEMENT EFFECTS OF A TAX POSITION WHEN IT IS MORE LIKELY THAN NOT, BASED ON THE TECHNICAL MERITS, THAT THE POSITION WILL BE SUSTAINED UPON EXAMINATION. WITH RESPECT TO THE ASSOCIATION, THIS WOULD PRIMARILY RELATE TO THE DETERMINATION OF UNRELATED BUSINESS TAXABLE INCOME, AND TO THE MAINTENANCE OF ITS TAX EXEMPT STATUS. MANAGEMENT HAS EVALUATED THE ADOPTED POLICIES AND PROCEDURES THAT HAVE BEEN IMPLEMENTED TO PROVIDE ASSURANCE THAT INCOME IS PROPERLY CHARACTERIZED AND ACTIVITIES THAT JEOPARDIZE ITS TAX EXEMPT STATUS ARE WITHIN LIMITS ESTABLISHED UNDER EXISTING TAX CODE AND REGULATIONS. MANAGEMENT HAS DETERMINED THE EFFECTS OF UNCERTAIN TAX POSITIONS ARE NOT MATERIAL TO THE ASSOCIATION FOR RECOGNITION OR DISCLOSURE IN THE ACCOMPANYING FINANCIAL STATEMENTS AND, ACCORDINGLY, NO INCOME TAX LIABILITY HAS BEEN RECORDED FOR UNCERTAIN INCOME TAX POSITIONS IN THE ACCOMPANYING FINANCIAL STATEMENTS. ALL INCOME TAX YEARS OPEN FOR EXAMINATION ARE SUBJECT TO TAXATION AT CORPORATE TAX RATES. THE YEARS ENDED DECEMBER 31, 2010, 2009, AND 2008 ARE AVAILABLE FOR EXAMINATION AT DECEMBER 31, 2011. ADDITIONALLY, PENALTIES AND INTEREST MAY BE ASSESSED ON INCOME TAXES THAT ARE DELINQUENT. THE ASSESSMENT OF UNCERTAIN INCOME TAXES IS SUBJECT TO ESTIMATE, AND IT IS REASONABLY POSSIBLE THAT THE ESTIMATE MAY CHANGE IN THE NEAR TERM AND THE CHANGE MAY BE MATERIAL.

PART XI, LINE 8 - OTHER ADJUSTMENTS:

UNREIMBURSED VOLUNTEER EXPENSES	375.
BOOK DEPRECIATION IN EXCESS OF TAX	-669.
TOTAL TO SCHEDULE D, PART XI, LINE 8	-294.

Part XIV Supplemental Information (continued)

PART XII, LINE 2D - OTHER ADJUSTMENTS:

RENTAL EXPENSES OFFSETTING INCOME 72,092.

REIMBURSE VOLUNTEER EXPENSES 376.

PART XII, LINE 4B - OTHER ADJUSTMENTS:

TRIPLE NET LEASE EXPENSES REIMBURSED BY LEASEE 15,897

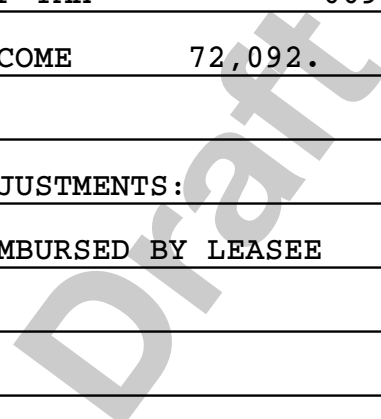
PART XIII, LINE 2D - OTHER ADJUSTMENTS:

BOOK DEPRECIATION IN EXCESS OF TAX 669.

RENTAL EXPENSES OFFSETTING INCOME 72,092.

PART XIII, LINE 4B - OTHER ADJUSTMENTS:

TRIPLE NET LEASE EXPENSES REIMBURSED BY LEASEE 15,897.



**SCHEDULE F
(Form 990)**

Department of the Treasury
Internal Revenue Service

Statement of Activities Outside the United States

▶ Complete if the organization answered "Yes" to Form 990,
Part IV, line 14b, 15, or 16.
▶ Attach to Form 990. ▶ See separate instructions.

OMB No. 1545-0047

2011

Open to Public
Inspection

Name of the organization: **NATIONAL ASSOCIATION FOR INTERPRETATION**
Employer identification number: **84-1036938**

Part I General Information on Activities Outside the United States. Complete if the organization answered "Yes" to Form 990, Part IV, line 14b.

1 For grantmakers. Does the organization maintain records to substantiate the amount of its grants and other assistance, the grantees' eligibility for the grants or assistance, and the selection criteria used to award the grants or assistance? **Yes** **No**

2 For grantmakers. Describe in Part V the organization's procedures for monitoring the use of its grants and other assistance outside the United States.

3 Activities per Region. (The following Part I, line 3 table can be duplicated if additional space is needed.)

(a) Region	(b) Number of offices in the region	(c) Number of employees, agents, and independent contractors in region	(d) Activities conducted in region (by type) (e.g., fundraising, program services, investments, grants to recipients located in the region)	(e) If activity listed in (d) is a program service, describe specific type of service(s) in region	(f) Total expenditures for and investments in region
CENTRAL AMERICA AND THE CARIBBEAN	0	0	PROGRAM SERVICES	FACILITATING COMMUNICATION AND EDUCATION AMONG THOSE IN THE INTERPRETATION	30,981.
CENTRAL AMERICA AND THE CARIBBEAN	0	0	GRANTS TO RECIPIENTS LOCATED IN REGION	FACILITATING COMMUNICATION AND EDUCATION AMONG THOSE IN THE INTERPRETATION	3,000.
3 a Sub-total	0	0			33,981.
b Total from continuation sheets to Part I	0	0			0.
c Totals (add lines 3a and 3b)	0	0			33,981.

Part II **Grants and Other Assistance to Organizations or Entities Outside the United States.** Complete if the organization answered "Yes" to Form 990, Part IV, line 15, for any recipient who received more than \$5,000. Check this box if no one recipient received more than \$5,000 Part II can be duplicated if additional space is needed.

1 (a) Name of organization	(b) IRS code section and EIN (if applicable)	(c) Region	(d) Purpose of grant	(e) Amount of cash grant	(f) Manner of cash disbursement	(g) Amount of non-cash assistance	(h) Description of non-cash assistance	(i) Method of valuation (book, FMV, appraisal, other)

Draft

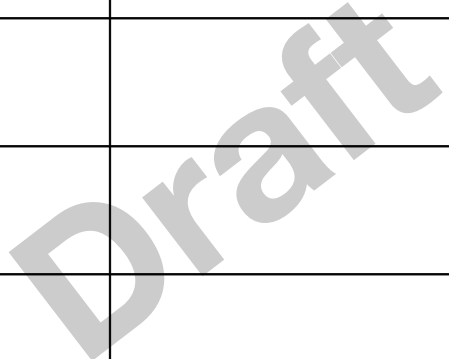
2 Enter total number of recipient organizations listed above that are recognized as charities by the foreign country, recognized as tax-exempt by the IRS, or for which the grantee or counsel has provided a section 501(c)(3) equivalency letter

3 Enter total number of other organizations or entities

Part III Grants and Other Assistance to Individuals Outside the United States. Complete if the organization answered "Yes" to Form 990, Part IV, line 16.

Part III can be duplicated if additional space is needed.

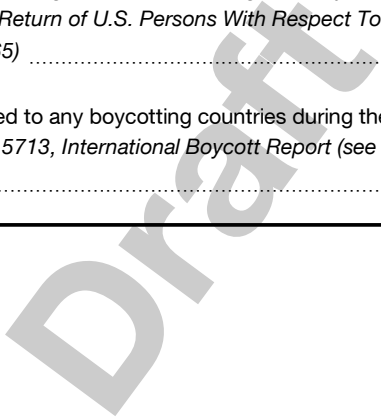
(a) Type of grant or assistance	(b) Region	(c) Number of recipients	(d) Amount of cash grant	(e) Manner of cash disbursement	(f) Amount of non-cash assistance	(g) Description of non-cash assistance	(h) Method of valuation (book, FMV, appraisal, other)



Part IV Foreign Forms

- 1 Was the organization a U.S. transferor of property to a foreign corporation during the tax year? *If "Yes," the organization may be required to file Form 926, Return by a U.S. Transferor of Property to a Foreign Corporation (see Instructions for Form 926)* Yes No
- 2 Did the organization have an interest in a foreign trust during the tax year? *If "Yes," the organization may be required to file Form 3520, Annual Return to Report Transactions with Foreign Trusts and Receipt of Certain Foreign Gifts, and/or Form 3520-A, Annual Information Return of Foreign Trust With a U.S. Owner (see Instructions for Forms 3520 and 3520-A)* Yes No
- 3 Did the organization have an ownership interest in a foreign corporation during the tax year? *If "Yes," the organization may be required to file Form 5471, Information Return of U.S. Persons With Respect To Certain Foreign Corporations. (see Instructions for Form 5471)* Yes No
- 4 Was the organization a direct or indirect shareholder of a passive foreign investment company or a qualified electing fund during the tax year? *If "Yes," the organization may be required to file Form 8621, Information Return by a Shareholder of a Passive Foreign Investment Company or Qualified Electing Fund. (see Instructions for Form 8621)* Yes No
- 5 Did the organization have an ownership interest in a foreign partnership during the tax year? *If "Yes," the organization may be required to file Form 8865, Return of U.S. Persons With Respect To Certain Foreign Partnerships. (see Instructions for Form 8865)* Yes No
- 6 Did the organization have any operations in or related to any boycotting countries during the tax year? *If "Yes," the organization may be required to file Form 5713, International Boycott Report (see Instructions for Form 5713)* Yes No

Schedule F (Form 990) 2011



Part V Supplemental Information

Complete this part to provide the information required by Part I, line 2 (monitoring of funds); Part I, line 3, column (f) (accounting method; amounts of investments vs. expenditures per region); Part II, line 1 (accounting method); Part III (accounting method); and Part III, column (c) (estimated number of recipients), as applicable. Also complete this part to provide any additional information.

SCHEDULE F, PART I, LINE 2: APPLICANTS MUST MEET SPECIFIC CRITERIA.

BOARD MEMBERS WITH SOME INTERNATIONAL EXPERIENCE ARE ON THE REVIEW

COMMITTEE THAT SCORE APPLICANTS BY NEED AND POTENTIAL BENEFIT FROM THE

WORKSHOP TO FURTHER THEIR CAREER. GRANTS AWARDED ARE FOR WORKSHOPS THAT

ARE PUT ON BY THE ORGANIZATION. CASH NEVER GOES TO THE APPLICANT.

PART I, LINE 3, COLUMN (E):

REGION: CENTRAL AMERICA AND THE CARIBBEAN

(E) SPECIFIC TYPES OF SERVICES IN REGION: FACILITATING COMMUNICATION AND EDUCATION AMONG THOSE IN THE INTERPRETATION PROFESSION FOR THE EXCHANGE OF IDEAS, TECHNIQUES, AND MUTUAL ASSISTANCE.

REGION: CENTRAL AMERICA AND THE CARIBBEAN

(E) SPECIFIC TYPES OF SERVICES IN REGION: FACILITATING COMMUNICATION AND EDUCATION AMONG THOSE IN THE INTERPRETATION PROFESSION FOR THE EXCHANGE OF IDEAS, TECHNIQUES, AND MUTUAL ASSISTANCE.

SCHEDULE I
(Form 990)

Department of the Treasury
Internal Revenue Service

Grants and Other Assistance to Organizations,
Governments, and Individuals in the United States

Complete if the organization answered "Yes" to Form 990, Part IV, line 21 or 22.
▶ Attach to Form 990.

OMB No. 1545-0047

2011

Open to Public
Inspection

Name of the organization

NATIONAL ASSOCIATION FOR INTERPRETATION

Employer identification number

84-1036938

Part I General Information on Grants and Assistance

1 Does the organization maintain records to substantiate the amount of the grants or assistance, the grantees' eligibility for the grants or assistance, and the selection criteria used to award the grants or assistance? Yes No

2 Describe in Part IV the organization's procedures for monitoring the use of grant funds in the United States.

Part II Grants and Other Assistance to Governments and Organizations in the United States. Complete if the organization answered "Yes" to Form 990, Part IV, line 21, for any recipient that received more than \$5,000. Check this box if no one recipient received more than \$5,000. Part II can be duplicated if additional space is needed

1 (a) Name and address of organization or government	(b) EIN	(c) IRC section if applicable	(d) Amount of cash grant	(e) Amount of non-cash assistance	(f) Method of valuation (book, FMV, appraisal, other)	(g) Description of non-cash assistance	(h) Purpose of grant or assistance

2 Enter total number of section 501(c)(3) and government organizations listed in the line 1 table

3 Enter total number of other organizations listed in the line 1 table

Supplemental Information on Tax-Exempt Bonds

▶ **Complete if the organization answered "Yes" to Form 990, Part IV, line 24a. Provide descriptions, explanations, and any additional information in Part VI.**
▶ **Attach to Form 990.** ▶ **See separate instructions.**

Name of the organization

NATIONAL ASSOCIATION FOR INTERPRETATION

Employer identification number
84-1036938

Part I Bond Issues		SEE PART VI FOR COLUMN (F) CONTINUATIONS										
	(a) Issuer name	(b) Issuer EIN	(c) CUSIP #	(d) Date issued	(e) Issue price	(f) Description of purpose	(g) Defeased		(h) On behalf of issuer		(i) Pooled financing	
							Yes	No	Yes	No	Yes	No
A	LARIMER COUNTY, COLORADO	84-6000779	NONE	12/15/04	730,000.	TO CONSTRUCT A BUILDING IN FORT		X		X		X
B												
C												
D												

Part II Proceeds									
		A		B		C		D	
1	Amount of bonds retired								
2	Amount of bonds legally defeased								
3	Total proceeds of issue	730,000.							
4	Gross proceeds in reserve funds								
5	Capitalized interest from proceeds								
6	Proceeds in refunding escrows								
7	Issuance costs from proceeds	14,600.							
8	Credit enhancement from proceeds								
9	Working capital expenditures from proceeds								
10	Capital expenditures from proceeds	715,400.							
11	Other spent proceeds								
12	Other unspent proceeds								
13	Year of substantial completion	2004							
		Yes	No	Yes	No	Yes	No	Yes	No
14	Were the bonds issued as part of a current refunding issue?		X						
15	Were the bonds issued as part of an advance refunding issue?		X						
16	Has the final allocation of proceeds been made?	X							
17	Does the organization maintain adequate books and records to support the final allocation of proceeds?	X							

Part III Private Business Use									
		A		B		C		D	
		Yes	No	Yes	No	Yes	No	Yes	No
1	Was the organization a partner in a partnership, or a member of an LLC, which owned property financed by tax-exempt bonds?		X						
2	Are there any lease arrangements that may result in private business use of bond-financed property?	X							

Part III Private Business Use (Continued)

	A		B		C		D	
	Yes	No	Yes	No	Yes	No	Yes	No
3a Are there any management or service contracts that may result in private business use of bond-financed property?		X						
b If "Yes" to line 3a, does the organization routinely engage bond counsel or other outside counsel to review any management or service contracts relating to the financed property?								
c Are there any research agreements that may result in private business use of bond-financed property?		X						
d If "Yes" to line 3c, does the organization routinely engage bond counsel or other outside counsel to review any research agreements relating to the financed property?								
4 Enter the percentage of financed property used in a private business use by entities other than a section 501(c)(3) organization or a state or local government								
5 Enter the percentage of financed property used in a private business use as a result of unrelated trade or business activity carried on by your organization, another section 501(c)(3) organization, or a state or local government	66.00	%		%		%		%
6 Total of lines 4 and 5	66.00	%		%		%		%
7 Has the organization adopted management practices and procedures to ensure the post-issuance compliance of its tax-exempt bond liabilities?		X						

Part IV Arbitrage

	A		B		C		D	
	Yes	No	Yes	No	Yes	No	Yes	No
1 Has a Form 8038-T, Arbitrage Rebate, Yield Reduction and Penalty in Lieu of Arbitrage Rebate, been filed with respect to the bond issue?		X						
2 Is the bond issue a variable rate issue?		X						
3a Has the organization or the governmental issuer entered into a qualified hedge with respect to the bond issue?		X						
b Name of provider								
c Term of hedge								
d Was the hedge superintergrated?								
e Was the hedge terminated?								
4a Were gross proceeds invested in a guaranteed investment contract (GIC)?		X						
b Name of provider								
c Term of GIC								
d Was the regulatory safe harbor for establishing the fair market value of the GIC satisfied?								
5 Were any gross proceeds invested beyond an available temporary period?		X						
6 Did the bond issue qualify for an exception to rebate?		X						

Part V Procedures To Undertake Corrective Action

Check the box if the organization established written procedures to ensure that violations of federal tax requirements are timely identified and corrected through the voluntary closing agreement program if self-remediation is not available under applicable regulations Yes No

Part VI Supplemental Information. Complete this part to provide additional information for responses to questions on Schedule K.

SCHEDULE K, PART I, BOND ISSUES:

(A) ISSUER NAME: LARIMER COUNTY, COLORADO

Part VI Supplemental Information. Complete this part to provide additional information for responses to questions on Schedule K.

(F) DESCRIPTION OF PURPOSE:

TO CONSTRUCT A BUILDING IN FORT COLLINS COLORADO FOR EDUCATION

Draft

SCHEDULE O
(Form 990 or 990-EZ)

Department of the Treasury
Internal Revenue Service

Supplemental Information to Form 990 or 990-EZ

Complete to provide information for responses to specific questions on
Form 990 or 990-EZ or to provide any additional information.
▶ Attach to Form 990 or 990-EZ.

OMB No. 1545-0047

2011

Open to Public
Inspection

Name of the organization

NATIONAL ASSOCIATION FOR INTERPRETATION

Employer identification number

84-1036938

FORM 990, PART III, LINE 1, DESCRIPTION OF ORGANIZATION MISSION:

ASSISTANCE. SUCH COMMUNICATION WILL INCLUDE BUT NOT BE LIMITED TO
PRINT AND ELECTRONIC MEDIA WORKSHOPS, AND CONFERENCES.

B. DEVELOPING AND MAINTAINING COMMUNICATION WITH RELATED PROFESSIONS

AND THE GENERAL PUBLIC TO PROMOTE INTEREST IN AND UNDERSTANDING OF THE
OBJECTIVES AND PRACTICES OF INTERPRETATION.

C. ENCOURAGING AND ASSISTING EDUCATIONAL INSTITUTIONS TO ESTABLISH

AND/OR UPDATE CURRICULA FOR THE EDUCATION OF INTERPRETATION

PROFESSIONALS.

D. PROMOTING RESEARCH AND OTHER SCHOLARLY ENDEAVORS, INCLUDING

PROVISION OF ORAL AND PRINTED FORUMS FOR PRESENTATION OF SUCH EFFORTS

AND THEIR OUTCOMES.

FORM 990, PART III, LINE 4D, OTHER PROGRAM SERVICES:

ALL OTHER PROGRAMS

EXPENSES \$ 631,137. INCLUDING GRANTS OF \$ 0. REVENUE \$ 272,570.

FORM 990, PART VI, SECTION A, LINE 2: TWO OF THE BOARD MEMBERS ARE

COUSINS. ONE IS ELECTED AND ONE WAS APPOINTED AT-LARGE. THE AT-LARGE

MEMBER WAS APPOINTED BEFORE HIS COUSIN WAS ELECTED TO THE BOARD.

FORM 990, PART VI, SECTION A, LINE 6: NAI HAD 4,960 MEMBERS AT THE END OF

2011. OF THE 4,960 ABOUT 600 WERE STUDENTS, 160 WERE INSTITUTIONS, 105

WERE COMMERCIAL BUSINESSES. MEMBERS RECEIVE DISCOUNTS ON MEMBER SERVICES,

TRAINING, BOOKS, ETC.

Name of the organization NATIONAL ASSOCIATION FOR INTERPRETATION	Employer identification number 84-1036938
---	--

FORM 990, PART VI, SECTION A, LINE 7A: MEMBERS ELECT 13 OF THE 16 BOARD MEMBERS

FORM 990, PART VI, SECTION B, LINE 11: FORM 990 IS DISTRIBUTED TO THE BOARD AND THE AUDIT COMMITTEE GENERALLY BY E-MAIL. THE BOARD IS ASKED TO REVIEW AND VOICE ANY COMMENTS OR CONCERNS TO THE EXECUTIVE DIRECTOR

FORM 990, PART VI, SECTION B, LINE 12C: OFFICERS ARE REQUIRED TO SIGN A CONFLICT OF INTEREST STATEMENT ANNUALLY AND DISCLOSE ANY POTENTIAL CONFLICTS. THE STATEMENTS ARE MONITORED AND ARE ON FILE.

FORM 990, PART VI, SECTION B, LINE 15: THE ORGANIZATION HAS AN EXECUTIVE PERSONNEL COMMITTEE THAT UTILIZES THE ANNUAL ASAE FOR COMPENSATION COMPARABLES. THE COMMITTEE ANALYZES PERFORMANCE AS IT RELATES TO THE BUSINESS PLAN. IN CONCLUSION, THE COMMITTEE ISSUES A REPORT AND A RECOMMENDATION TO THE BOARD OF DIRECTORS. SINCE THE ASSOCIATE DIRECTOR IS MARRIED TO THE DIRECTOR, THE COMPENSATION COMMITTEE ALSO REVIEWS, SUBSTANTIATES AND RECOMMENDS HER ANNUAL COMPENSATION TO THE BOARD.

FORM 990, PART VI, SECTION C, LINE 19: THE GOVERNING DOCUMENTS, CONFLICT OF INTEREST POLICY, AND FINANCIAL STATEMENTS ARE AVAILABLE TO THE PUBLIC ON THE ORGANIZATION'S WEBSITE. THERE IS NO PASSWORD AND THEY ARE DOWNLOADABLE.

FORM 990, PART XI, LINE 5, CHANGES IN NET ASSETS:

NET UNREALIZED GAINS ON INVESTMENTS:	6,247.
UNREIMBURSED VOLUNTEER EXPENSES	375.
BOOK DEPRECIATION IN EXCESS OF TAX	-669.

Name of the organization

NATIONAL ASSOCIATION FOR INTERPRETATION

Employer identification number
84-1036938

TOTAL TO FORM 990, PART XI, LINE 5

5,953.

Draft

Exempt Organization Business Income Tax Return

(and proxy tax under section 6033(e))

2011

Open to Public Inspection for 501(c)(3) Organizations Only

Department of the Treasury
Internal Revenue Service

For calendar year 2011 or other tax year beginning _____, and ending _____

A <input type="checkbox"/> Check box if address changed	B Exempt under section <input checked="" type="checkbox"/> 501(c)(3) <input type="checkbox"/> 408(e) <input type="checkbox"/> 220(e) <input type="checkbox"/> 408A <input type="checkbox"/> 530(a) <input type="checkbox"/> 529(a)	Print or Type	Name of organization (<input type="checkbox"/> Check box if name changed and see instructions.) NATIONAL ASSOCIATION FOR INTERPRETATION Number, street, and room or suite no. If a P.O. box, see instructions. P.O. BOX 2246 City or town, state, and ZIP code FORT COLLINS, CO 80522	D Employer identification number (Employees' trust, see instructions.) 84-1036938 E Unrelated business activity codes (See instructions.) 511120 531120
C Book value of all assets at end of year 1,403,621.		F Group exemption number (See instructions.) _____ G Check organization type <input checked="" type="checkbox"/> 501(c) corporation <input type="checkbox"/> 501(c) trust <input type="checkbox"/> 401(a) trust <input type="checkbox"/> Other trust		

H Describe the organization's primary unrelated business activity. **SEE STATEMENT 1**

I During the tax year, was the corporation a subsidiary in an affiliated group or a parent-subsidiary controlled group? Yes No
 If "Yes," enter the name and identifying number of the parent corporation. _____

J The books are in care of **NATIONAL ASSOCIATION FOR INTERPRETATION** Telephone number **970-484-8283**

Part I Unrelated Trade or Business Income	(A) Income	(B) Expenses	(C) Net
1 a Gross receipts or sales			
b Less returns and allowances c Balance	1c		
2 Cost of goods sold (Schedule A, line 7)	2		
3 Gross profit. Subtract line 2 from line 1c	3		
4 a Capital gain net income (attach Schedule D)	4a		
b Net gain (loss) (Form 4797, Part II, line 17) (attach Form 4797)	4b		
c Capital loss deduction for trusts	4c		
5 Income (loss) from partnerships and S corporations (attach statement)	5		
6 Rent income (Schedule C)	6		
7 Unrelated debt-financed income (Schedule E)	7	21,528.	31,829.
8 Interest, annuities, royalties, and rents from controlled organizations (Sch. F)	8		
9 Investment income of a section 501(c)(7), (9), or (17) organization (Schedule G)	9		
10 Exploited exempt activity income (Schedule I)	10		
11 Advertising income (Schedule J)	11	56,450.	34,619.
12 Other income (See instructions; attach schedule.)	12		
13 Total. Combine lines 3 through 12	13	77,978.	66,448.
			11,530.

Part II Deductions Not Taken Elsewhere (See instructions for limitations on deductions.)
 (Except for contributions, deductions must be directly connected with the unrelated business income.)

14 Compensation of officers, directors, and trustees (Schedule K)	14		
15 Salaries and wages	15		
16 Repairs and maintenance	16		
17 Bad debts	17		
18 Interest (attach schedule)	18		
19 Taxes and licenses	19		
20 Charitable contributions (See instructions for limitation rules.)	20		
21 Depreciation (attach Form 4562)	21	16,252.	
22 Less depreciation claimed on Schedule A and elsewhere on return	22a	16,252.	0.
23 Depletion	23		
24 Contributions to deferred compensation plans	24		
25 Employee benefit programs	25		
26 Excess exempt expenses (Schedule I)	26		
27 Excess readership costs (Schedule J)	27		21,831.
28 Other deductions (attach schedule)	28		
29 Total deductions. Add lines 14 through 28	29		21,831.
30 Unrelated business taxable income before net operating loss deduction. Subtract line 29 from line 13	30		-10,301.
31 Net operating loss deduction (limited to the amount on line 30)	31		0.
32 Unrelated business taxable income before specific deduction. Subtract line 31 from line 30	32		-10,301.
33 Specific deduction (Generally \$1,000, but see instructions for exceptions.)	33		1,000.
34 Unrelated business taxable income. Subtract line 33 from line 32. If line 33 is greater than line 32, enter the smaller of zero or line 32	34		-10,301.

Part III Tax Computation

35 Organizations Taxable as Corporations. See instructions for tax computation.
36 Trusts Taxable at Trust Rates. See instructions for tax computation.
37 Proxy tax. See instructions
38 Alternative minimum tax
39 Total. Add lines 37 and 38 to line 35c or 36, whichever applies

Part IV Tax and Payments

40a Foreign tax credit (corporations attach Form 1118; trusts attach Form 1116)
40b Other credits (see instructions)
40c General business credit. Attach Form 3800
40d Credit for prior year minimum tax (attach Form 8801 or 8827)
40e Total credits. Add lines 40a through 40d
41 Subtract line 40e from line 39
42 Other taxes. Check if from: Form 4255 Form 8611 Form 8697 Form 8866 Other (attach schedule)
43 Total tax. Add lines 41 and 42
44a Payments: A 2010 overpayment credited to 2011
44b 2011 estimated tax payments
44c Tax deposited with Form 8868
44d Foreign organizations: Tax paid or withheld at source (see instructions)
44e Backup withholding (see instructions)
44f Credit for small employer health insurance premiums (Attach Form 8941)
44g Other credits and payments: Form 2439 Form 4136 Other
45 Total payments. Add lines 44a through 44g
46 Estimated tax penalty (see instructions). Check if Form 2220 is attached
47 Tax due. If line 45 is less than the total of lines 43 and 46, enter amount owed
48 Overpayment. If line 45 is larger than the total of lines 43 and 46, enter amount overpaid
49 Enter the amount of line 48 you want: Credited to 2012 estimated tax Refunded

Part V Statements Regarding Certain Activities and Other Information (see instructions)

1 At any time during the 2011 calendar year, did the organization have an interest in or a signature or other authority over a financial account (bank, securities, or other) in a foreign country? If YES, the organization may have to file Form TD F 90-22.1, Report of Foreign Bank and Financial Accounts. If YES, enter the name of the foreign country here
2 During the tax year, did the organization receive a distribution from, or was it the grantor of, or transferor to, a foreign trust? If YES, see instructions for other forms the organization may have to file.
3 Enter the amount of tax-exempt interest received or accrued during the tax year

Schedule A - Cost of Goods Sold. Enter method of inventory valuation N/A

1 Inventory at beginning of year
2 Purchases
3 Cost of labor
4a Additional section 263A costs
4b Other costs (attach schedule)
5 Total. Add lines 1 through 4b
6 Inventory at end of year
7 Cost of goods sold. Subtract line 6 from line 5. Enter here and in Part I, line 2
8 Do the rules of section 263A (with respect to property produced or acquired for resale) apply to the organization?

Under penalties of perjury, I declare that I have examined this return, including accompanying schedules and statements, and to the best of my knowledge and belief, it is true, correct, and complete. Declaration of preparer (other than taxpayer) is based on all information of which preparer has any knowledge.

Sign Here
Signature of officer: SUSAN R. JOHNSON
Date:
EXECUTIVE DIRECTOR
Title:
May the IRS discuss this return with the preparer shown below (see instructions)? [X] Yes [] No

Paid Preparer Use Only
Print/Type preparer's name: SUSAN R. JOHNSON
Preparer's signature:
Date:
Check [] if self-employed [] PTIN: P01287360
Firm's name: BROCK AND COMPANY, CPAS, P.C.
Firm's EIN: 84-0930288
Firm's address: FORT COLLINS, CO 80525
Phone no.: 970-223-7855

Schedule C - Rent Income (From Real Property and Personal Property Leased With Real Property) (see instructions)

1. Description of property		
(1)		
(2)		
(3)		
(4)		
2. Rent received or accrued		3(a) Deductions directly connected with the income in columns 2(a) and 2(b) (attach schedule)
(a) From personal property (if the percentage of rent for personal property is more than 10% but not more than 50%)	(b) From real and personal property (if the percentage of rent for personal property exceeds 50% or if the rent is based on profit or income)	
(1)		
(2)		
(3)		
(4)		
Total	0.	Total
Total		0.
(c) Total income. Add totals of columns 2(a) and 2(b). Enter here and on page 1, Part I, line 6, column (A)		(b) Total deductions. Enter here and on page 1, Part I, line 6, column (B) ...
		0.

Schedule E - Unrelated Debt-Financed Income (see instructions)

1. Description of debt-financed property		2. Gross income from or allocable to debt-financed property	3. Deductions directly connected with or allocable to debt-financed property	
			(a) Straight line depreciation (attach schedule) STATEMENT 3	(b) Other deductions (attach schedule) STATEMENT 4
(1)	LEASE INCOME	48,760.	16,252.	55,840.
(2)				
(3)				
(4)				
4. Amount of average acquisition debt on or allocable to debt-financed property (attach schedule) STATEMENT 5	5. Average adjusted basis of or allocable to debt-financed property (attach schedule) STATEMENT 6	6. Column 4 divided by column 5	7. Gross income reportable (column 2 x column 6)	8. Allocable deductions (column 6 x total of columns 3(a) and 3(b))
(1)	414,237.	938,308.	44.15%	21,528.
(2)			%	
(3)			%	
(4)			%	
Totals			21,528.	31,829.
Total dividends-received deductions included in column 8				0.

Schedule F - Interest, Annuities, Royalties, and Rents From Controlled Organizations (see instructions)

1. Name of controlled organization	2. Employer identification number	Exempt Controlled Organizations			
		3. Net unrelated income (loss) (see instructions)	4. Total of specified payments made	5. Part of column 4 that is included in the controlling organization's gross income	6. Deductions directly connected with income in column 5
(1)					
(2)					
(3)					
(4)					

Nonexempt Controlled Organizations

7. Taxable Income	8. Net unrelated income (loss) (see instructions)	9. Total of specified payments made	10. Part of column 9 that is included in the controlling organization's gross income	11. Deductions directly connected with income in column 10
(1)				
(2)				
(3)				
(4)				
Totals			0.	0.

Schedule G - Investment Income of a Section 501(c)(7), (9), or (17) Organization
(see instructions)

1. Description of income	2. Amount of income	3. Deductions directly connected (attach schedule)	4. Set-asides (attach schedule)	5. Total deductions and set-asides (col. 3 plus col. 4)
(1)				
(2)				
(3)				
(4)				
Totals	0.			0.

Schedule I - Exploited Exempt Activity Income, Other Than Advertising Income
(see instructions)

1. Description of exploited activity	2. Gross unrelated business income from trade or business	3. Expenses directly connected with production of unrelated business income	4. Net income (loss) from unrelated trade or business (column 2 minus column 3). If a gain, compute cols. 5 through 7.	5. Gross income from activity that is not unrelated business income	6. Expenses attributable to column 5	7. Excess exempt expenses (column 6 minus column 5, but not more than column 4).
(1)						
(2)						
(3)						
(4)						
Totals	0.	0.				0.

Schedule J - Advertising Income (see instructions)

Part I Income From Periodicals Reported on a Consolidated Basis

1. Name of periodical	2. Gross advertising income	3. Direct advertising costs	4. Advertising gain or (loss) (col. 2 minus col. 3). If a gain, compute cols. 5 through 7.	5. Circulation income	6. Readership costs	7. Excess readership costs (column 6 minus column 5, but not more than column 4).
(1) LEGACY MAGAZINE	54,550.	33,976.		41,870.	96,700.	
(2) JOBS INCOME	1,900.	643.		0.	0.	
(3)						
(4)						
Totals (carry to Part II, line (5))	56,450.	34,619.	21,831.	41,870.	96,700.	21,831.

Part II Income From Periodicals Reported on a Separate Basis (For each periodical listed in Part II, fill in columns 2 through 7 on a line-by-line basis.)

1. Name of periodical	2. Gross advertising income	3. Direct advertising costs	4. Advertising gain or (loss) (col. 2 minus col. 3). If a gain, compute cols. 5 through 7.	5. Circulation income	6. Readership costs	7. Excess readership costs (column 6 minus column 5, but not more than column 4).
(1)						
(2)						
(3)						
(4)						
(5) Totals from Part I	56,450.	34,619.				21,831.
Totals, Part II (lines 1-5)	56,450.	34,619.				21,831.

Schedule K - Compensation of Officers, Directors, and Trustees (see instructions)

1. Name	2. Title	3. Percent of time devoted to business	4. Compensation attributable to unrelated business
(1)			%
(2)			%
(3)			%
(4)			%
Total. Enter here and on page 1, Part II, line 14			0.

FORM 990-T	DESCRIPTION OF ORGANIZATION'S PRIMARY UNRELATED BUSINESS ACTIVITY	STATEMENT 1
------------	---	-------------

THE ORGANIZATION PRODUCES SEVERAL PUBLICATIONS TO EDUCATE AND SERVE MEMBERS AND SELLS ADS IN SOME OF THE PUBLICATIONS

TO FORM 990-T, PAGE 1

FOOTNOTES	STATEMENT 2
-----------	-------------

2005 NET OPERATING LOSS CARRYOVER	942.
2006 NET OPERATING LOSS CARRYOVER	221.
2008 NET OPERATING LOSS CARRYOVER	9,005.
2009 NET OPERATING LOSS CARRYOVER	13,524.
2010 NET OPERATING LOSS CARRYOVER	11,426.

Draft

FORM 990-T SCHEDULE E - DEPRECIATION DEDUCTION STATEMENT 3

DESCRIPTION	ACTIVITY NUMBER	AMOUNT	TOTAL
DEPRECIATION		16,252.	
- SUBTOTAL -	1		16,252.
TOTAL OF FORM 990-T, SCHEDULE E, COLUMN 3(A)			16,252.

FORM 990-T SCHEDULE E - OTHER DEDUCTIONS STATEMENT 4

DESCRIPTION	ACTIVITY NUMBER	AMOUNT	TOTAL
MORTGAGE INTEREST		12,585.	
FACILITES EXPENSE		3,408.	
MAINTENANCE AND REPAIR		5,643.	
SUPPLIES		754.	
TAXES		20,161.	
UTILITIES		5,983.	
INSURANCE		3,846.	
ADMINISTRATION COSTS		3,460.	
- SUBTOTAL -	1		55,840.
TOTAL OF FORM 990-T, SCHEDULE E, COLUMN 3(B)			55,840.

FORM 990-T AVERAGE ACQUISITION DEBT ON OR ALLOCABLE TO DEBT-FINANCED PROPERTY STATEMENT 5

DESCRIPTION	ACTIVITY NUMBER	AMOUNT	TOTAL
AVERAGE ACQUISITION DEBT ALLOCABLE TO DEBT-FIN PROPERTY		414,237.	
- SUBTOTAL -	1		414,237.
TOTAL OF FORM 990-T, SCHEDULE E, COLUMN 4			414,237.

Depreciation and Amortization
 (Including Information on Listed Property)

E- 1

▶ See separate instructions. ▶ Attach to your tax return.

Name(s) shown on return: **NATIONAL ASSOCIATION FOR INTERPRETATION LEASE INCOME**
 Business or activity to which this form relates: **LEASE INCOME**
 Identifying number: **84-1036938**

Part I Election To Expense Certain Property Under Section 179 Note: If you have any listed property, complete Part V before you complete Part I.

1	Maximum amount (see instructions)	1	500,000.
2	Total cost of section 179 property placed in service (see instructions)	2	
3	Threshold cost of section 179 property before reduction in limitation	3	2,000,000.
4	Reduction in limitation. Subtract line 3 from line 2. If zero or less, enter -0-	4	
5	Dollar limitation for tax year. Subtract line 4 from line 1. If zero or less, enter -0-. If married filing separately, see instructions	5	
6	(a) Description of property	(b) Cost (business use only)	(c) Elected cost
7	Listed property. Enter the amount from line 29	7	
8	Total elected cost of section 179 property. Add amounts in column (c), lines 6 and 7	8	
9	Tentative deduction. Enter the smaller of line 5 or line 8	9	
10	Carryover of disallowed deduction from line 13 of your 2010 Form 4562	10	
11	Business income limitation. Enter the smaller of business income (not less than zero) or line 5	11	
12	Section 179 expense deduction. Add lines 9 and 10, but do not enter more than line 11	12	
13	Carryover of disallowed deduction to 2012. Add lines 9 and 10, less line 12	▶ 13	

Note: Do not use Part II or Part III below for listed property. Instead, use Part V.

Part II Special Depreciation Allowance and Other Depreciation (Do not include listed property.)

14	Special depreciation allowance for qualified property (other than listed property) placed in service during the tax year	14	
15	Property subject to section 168(f)(1) election	15	
16	Other depreciation (including ACRS)	16	

Part III MACRS Depreciation (Do not include listed property.) (See instructions.)

Section A

17	MACRS deductions for assets placed in service in tax years beginning before 2011	17	16,252.
18	If you are electing to group any assets placed in service during the tax year into one or more general asset accounts, check here	▶ <input type="checkbox"/>	

Section B - Assets Placed in Service During 2011 Tax Year Using the General Depreciation System

(a) Classification of property	(b) Month and year placed in service	(c) Basis for depreciation (business/investment use only - see instructions)	(d) Recovery period	(e) Convention	(f) Method	(g) Depreciation deduction
19a 3-year property						
b 5-year property						
c 7-year property						
d 10-year property						
e 15-year property						
f 20-year property						
g 25-year property			25 yrs.		S/L	
h Residential rental property	/		27.5 yrs.	MM	S/L	
	/		27.5 yrs.	MM	S/L	
i Nonresidential real property	/		39 yrs.	MM	S/L	
	/			MM	S/L	

Section C - Assets Placed in Service During 2011 Tax Year Using the Alternative Depreciation System

20a Class life					S/L	
b 12-year			12 yrs.		S/L	
c 40-year	/		40 yrs.	MM	S/L	

Part IV Summary (See instructions.)

21	Listed property. Enter amount from line 28	21	
22	Total. Add amounts from line 12, lines 14 through 17, lines 19 and 20 in column (g), and line 21. Enter here and on the appropriate lines of your return. Partnerships and S corporations - see instr.	22	16,252.
23	For assets shown above and placed in service during the current year, enter the portion of the basis attributable to section 263A costs	23	

Part V Listed Property (Include automobiles, certain other vehicles, certain computers, and property used for entertainment, recreation, or amusement.)

Note: For any vehicle for which you are using the standard mileage rate or deducting lease expense, complete only 24a, 24b, columns (a) through (c) of Section A, all of Section B, and Section C if applicable.

Section A - Depreciation and Other Information (Caution: See the instructions for limits for passenger automobiles.)

24a Do you have evidence to support the business/investment use claimed? <input type="checkbox"/> Yes <input type="checkbox"/> No				24b If "Yes," is the evidence written? <input type="checkbox"/> Yes <input type="checkbox"/> No				
(a) Type of property (list vehicles first)	(b) Date placed in service	(c) Business/ investment use percentage	(d) Cost or other basis	(e) Basis for depreciation (business/investment use only)	(f) Recovery period	(g) Method/ Convention	(h) Depreciation deduction	(i) Elected section 179 cost
25 Special depreciation allowance for qualified listed property placed in service during the tax year and used more than 50% in a qualified business use.....							25	
26 Property used more than 50% in a qualified business use:								
	:	:	%					
	:	:	%					
	:	:	%					
27 Property used 50% or less in a qualified business use:								
	:	:	%			S/L -		
	:	:	%			S/L -		
	:	:	%			S/L -		
28 Add amounts in column (h), lines 25 through 27. Enter here and on line 21, page 1							28	
29 Add amounts in column (i), line 26. Enter here and on line 7, page 1								29

Section B - Information on Use of Vehicles

Complete this section for vehicles used by a sole proprietor, partner, or other "more than 5% owner," or related person. If you provided vehicles to your employees, first answer the questions in Section C to see if you meet an exception to completing this section for those vehicles.

30 Total business/investment miles driven during the year (do not include commuting miles)	(a) Vehicle		(b) Vehicle		(c) Vehicle		(d) Vehicle		(e) Vehicle		(f) Vehicle	
31 Total commuting miles driven during the year												
32 Total other personal (noncommuting) miles driven												
33 Total miles driven during the year. Add lines 30 through 32												
34 Was the vehicle available for personal use during off-duty hours?	Yes	No	Yes	No	Yes	No	Yes	No	Yes	No	Yes	No
35 Was the vehicle used primarily by a more than 5% owner or related person?												
36 Is another vehicle available for personal use?												

Section C - Questions for Employers Who Provide Vehicles for Use by Their Employees

Answer these questions to determine if you meet an exception to completing Section B for vehicles used by employees who are not more than 5% owners or related persons.

37 Do you maintain a written policy statement that prohibits all personal use of vehicles, including commuting, by your employees?	Yes	No
38 Do you maintain a written policy statement that prohibits personal use of vehicles, except commuting, by your employees? See the instructions for vehicles used by corporate officers, directors, or 1% or more owners		
39 Do you treat all use of vehicles by employees as personal use?		
40 Do you provide more than five vehicles to your employees, obtain information from your employees about the use of the vehicles, and retain the information received?		
41 Do you meet the requirements concerning qualified automobile demonstration use?		

Note: If your answer to 37, 38, 39, 40, or 41 is "Yes," do not complete Section B for the covered vehicles.

Part VI Amortization

(a) Description of costs	(b) Date amortization begins	(c) Amortizable amount	(d) Code section	(e) Amortization period or percentage	(f) Amortization for this year
42 Amortization of costs that begins during your 2011 tax year:					
	:				
	:				
43 Amortization of costs that began before your 2011 tax year					43
44 Total. Add amounts in column (f). See the instructions for where to report					44

Application for Extension of Time To File an Exempt Organization Return

▶ **File a separate application for each return.**

- If you are filing for an **Automatic 3-Month Extension**, complete only **Part I** and check this box **X**
- If you are filing for an **Additional (Not Automatic) 3-Month Extension**, complete only **Part II** (on page 2 of this form).

Do not complete Part II unless you have already been granted an automatic 3-month extension on a previously filed Form 8868.

Electronic filing (e-file) - You can electronically file Form 8868 if you need a 3-month automatic extension of time to file (6 months for a corporation required to file Form 990-T), or an additional (not automatic) 3-month extension of time. You can electronically file Form 8868 to request an extension of time to file any of the forms listed in Part I or Part II with the exception of Form 8870, Information Return for Transfers Associated With Certain Personal Benefit Contracts, which must be sent to the IRS in paper format (see instructions). For more details on the electronic filing of this form, visit www.irs.gov/efile and click on *e-file for Charities & Nonprofits*.

Part I Automatic 3-Month Extension of Time. Only submit original (no copies needed).

A corporation required to file Form 990-T and requesting an automatic 6-month extension - check this box and complete Part I only

All other corporations (including 1120-C filers), partnerships, REMICs, and trusts must use Form 7004 to request an extension of time to file income tax returns.

Type or print	Name of exempt organization or other filer, see instructions. NATIONAL ASSOCIATION FOR INTERPRETATION	Employer identification number (EIN) or <input checked="" type="checkbox"/> 84-1036938
File by the due date for filing your return. See instructions.	Number, street, and room or suite no. If a P.O. box, see instructions. P.O. BOX 2246	Social security number (SSN) <input type="checkbox"/>
	City, town or post office, state, and ZIP code. For a foreign address, see instructions. FORT COLLINS, CO 80522	

Enter the Return code for the return that this application is for (file a separate application for each return)

Application Is For	Return Code	Application Is For	Return Code
Form 990	01	Form 990-T (corporation)	07
Form 990-BL	02	Form 1041-A	08
Form 990-EZ	01	Form 4720	09
Form 990-PF	04	Form 5227	10
Form 990-T (sec. 401(a) or 408(a) trust)	05	Form 6069	11
Form 990-T (trust other than above)	06	Form 8870	12

NATIONAL ASSOCIATION FOR INTERPRETA

- The books are in the care of ▶ **230 CHERRY STREET - FORT COLLINS, CO 80522**
 Telephone No. ▶ **970-484-8283** FAX No. ▶ _____
- If the organization does not have an office or place of business in the United States, check this box
- If this is for a Group Return, enter the organization's four digit Group Exemption Number (GEN) _____. If this is for the whole group, check this box . If it is for part of the group, check this box and attach a list with the names and EINs of all members the extension is for.

1 I request an automatic 3-month (6 months for a corporation required to file Form 990-T) extension of time until **AUGUST 15, 2012**, to file the exempt organization return for the organization named above. The extension is for the organization's return for:
 ▶ calendar year **2011** or
 ▶ tax year beginning _____, and ending _____.

2 If the tax year entered in line 1 is for less than 12 months, check reason: Initial return Final return
 Change in accounting period

3a If this application is for Form 990-BL, 990-PF, 990-T, 4720, or 6069, enter the tentative tax, less any nonrefundable credits. See instructions.	3a	\$	0.
b If this application is for Form 990-PF, 990-T, 4720, or 6069, enter any refundable credits and estimated tax payments made. Include any prior year overpayment allowed as a credit.	3b	\$	0.
c Balance due. Subtract line 3b from line 3a. Include your payment with this form, if required, by using EFTPS (Electronic Federal Tax Payment System). See instructions.	3c	\$	0.

Caution. If you are going to make an electronic fund withdrawal with this Form 8868, see Form 8453-EO and Form 8879-EO for payment instructions.

**IRS e-file Signature Authorization
for an Exempt Organization**

For calendar year 2011, or fiscal year beginning _____, 2011, and ending _____, 20____

2011

Department of the Treasury
Internal Revenue Service

▶ **Do not send to the IRS. Keep for your records.**
▶ **See instructions.**

Name of exempt organization

Employer identification number

NATIONAL ASSOCIATION FOR INTERPRETATION

84-1036938

Name and title of officer

**TIM MERRIMAN
EXECUTIVE DIRECTOR**

Part I Type of Return and Return Information (Whole Dollars Only)

Check the box for the return for which you are using this Form 8879-EO and enter the applicable amount, if any, from the return. If you check the box on line **1a, 2a, 3a, 4a, or 5a**, below, and the amount on that line for the return being filed with this form was blank, then leave line **1b, 2b, 3b, 4b, or 5b**, whichever is applicable, blank (do not enter -0-). But, if you entered -0- on the return, then enter -0- on the applicable line below. **Do not** complete more than 1 line in Part I.

1a Form 990 check here ▶ <input checked="" type="checkbox"/>	b Total revenue , if any (Form 990, Part VIII, column (A), line 12)	1b <u>1407309</u>
2a Form 990-EZ check here ▶ <input type="checkbox"/>	b Total revenue , if any (Form 990-EZ, line 9)	2b _____
3a Form 1120-POL check here ▶ <input type="checkbox"/>	b Total tax (Form 1120-POL, line 22)	3b _____
4a Form 990-PF check here ▶ <input type="checkbox"/>	b Tax based on investment income (Form 990-PF, Part VI, line 5)	4b _____
5a Form 8868 check here ▶ <input type="checkbox"/>	b Balance Due (Form 8868, Part I, line 3c or Part II, line 8c)	5b _____

Part II Declaration and Signature Authorization of Officer

Under penalties of perjury, I declare that I am an officer of the above organization and that I have examined a copy of the organization's 2011 electronic return and accompanying schedules and statements and to the best of my knowledge and belief, they are true, correct, and complete. I further declare that the amount in Part I above is the amount shown on the copy of the organization's electronic return. I consent to allow my intermediate service provider, transmitter, or electronic return originator (ERO) to send the organization's return to the IRS and to receive from the IRS (a) an acknowledgement of receipt or reason for rejection of the transmission, (b) the reason for any delay in processing the return or refund, and (c) the date of any refund. If applicable, I authorize the U.S. Treasury and its designated Financial Agent to initiate an electronic funds withdrawal (direct debit) entry to the financial institution account indicated in the tax preparation software for payment of the organization's federal taxes owed on this return, and the financial institution to debit the entry to this account. To revoke a payment, I must contact the U.S. Treasury Financial Agent at 1-888-353-4537 no later than 2 business days prior to the payment (settlement) date. I also authorize the financial institutions involved in the processing of the electronic payment of taxes to receive confidential information necessary to answer inquiries and resolve issues related to the payment. I have selected a personal identification number (PIN) as my signature for the organization's electronic return and, if applicable, the organization's consent to electronic funds withdrawal.

Officer's PIN: check one box only

I authorize **BROCK AND COMPANY, CPAS, P.C.** to enter my PIN **36938**
ERO firm name Enter five numbers, but do not enter all zeros

as my signature on the organization's tax year 2011 electronically filed return. If I have indicated within this return that a copy of the return is being filed with a state agency(ies) regulating charities as part of the IRS Fed/State program, I also authorize the aforementioned ERO to enter my PIN on the return's disclosure consent screen.

As an officer of the organization, I will enter my PIN as my signature on the organization's tax year 2011 electronically filed return. If I have indicated within this return that a copy of the return is being filed with a state agency(ies) regulating charities as part of the IRS Fed/State program, I will enter my PIN on the return's disclosure consent screen.

Officer's signature ▶ _____ Date ▶ _____

Part III Certification and Authentication

ERO's EFIN/PIN. Enter your six-digit electronic filing identification number (EFIN) followed by your five-digit self-selected PIN.

84360980525
do not enter all zeros

I certify that the above numeric entry is my PIN, which is my signature on the 2011 electronically filed return for the organization indicated above. I confirm that I am submitting this return in accordance with the requirements of **Pub. 4163**, Modernized e-File (MeF) Information for Authorized IRS e-file Providers for Business Returns.

ERO's signature ▶ _____ Date ▶ _____

**ERO Must Retain This Form - See Instructions
Do Not Submit This Form To the IRS Unless Requested To Do So**